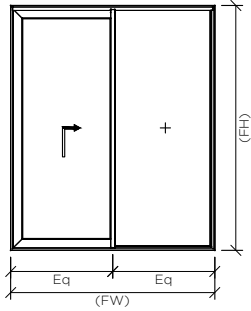


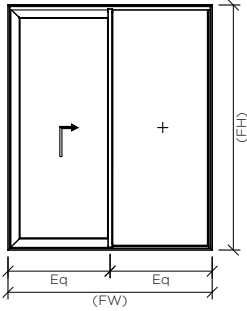
## FABRICATION & ASSEMBLY DETAILS



SCHEME-A CUTTING LENGTHS & PARTS LIST  
[SLIDING (SL) & LIFT & SLIDE (LS)]

NOTE: UNIT HEIGHT- FH  
UNIT WIDTH - FW  
(FW/2= FRAME CENTER/INTERLOCK CENTER)

SL.NO	NAME	ARTICLE NO.	SYMBOL	CUTTING LENGTH	CUTTING ANGLES	QTY	MACHINING & FIXING REFRANCE
01	FRAME PROFILE (FW & FH)	70101		FW & FH	45°-45°	FH-02 FW-02	
02	SASH PROFILE (VERTICAL)	70105		FH-65mm	45°-45°	01	
03	SASH PROFILE (BOTTOM)	70105		(FW/2)-26mm	45°-90°	01	
04	SASH PROFILE (TOP)	70105		(FW/2)-26mm	135°-90°	01	REFER THE DETAILS- 1 TO 6
05	FIX PROFILE (FIX GLASS)	70103		FH-42mm	90°-90°	01	
06	INTER.SASH PROFILE	70104		FH-68mm	90°-90°	01	
07	ADAPTOR PROFILE	26959		FW-66.8mm	90°-90°	01	
08	TRACK PROFILE	26957		FW-70mm	90°-90°	01	REFER THE DETAILS- 7
09	BOTTOM COVER	29140		(FW/2)-47mm	90°-90°	01	
10	SIDE COVER	26960		FH-71.3mm	90°-90°	01	
11	TOP COVER	29141		(FW/2)-37.3mm	90°-90°	01	REFER THE DETAILS- 8
12	INT. COVER (@70103)	26961		FH-71.3mm	90°-90°	01	
13	INT. COVER (@70104)	26961		FH-65mm	90°-90°	01	REFER THE DETAILS- 4
14	FIN. COVER (@70104)	26962		FH-68mm	90°-90°	01	REFER THE DETAILS- 6
15	DRIP PROFILE	27115		FW-32mm	90°-90°	01	
16	BARRIER PROFILE	27114		FW-6mm	90°-90°	01	REFER THE DETAILS- 7
17	INT.LOCK PROFILE	27117		FH-62mm	90°-90°	01	REFER THE DETAILS- 6
18	GLAZING BAR SHUTTER WIDTH	26958 (or) 29127		(FW/2)-91mm	90°-90°	02	
19	GLAZING BAR SHUTTER HEIGHT	26958 (or) 29127		FH-235mm	90°-90°	02	
20	GLAZING BAR FIX GLASS WIDTH	26958 (or) 29127		(FW/2)-21mm	90°-90°	02	



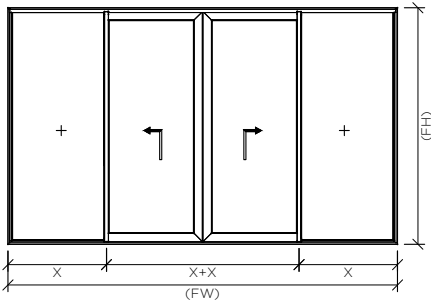
SCHEME-A CUTTING LENGTHS & PARTS LIST  
[SLIDING (SL) & LIFT & SLIDE (LS)]

NOTE: UNIT HEIGHT- FH  
UNIT WIDTH - FW  
(FW/2= FRAME CENTER/INTERLOCK CENTER)

SL.NO	NAME	ARTICLE NO.	SYMBOL	CUTTING	CUTTING ANGLES	QTY	MACHINING & FIXING REFRANCE
21	GLAZING BAR FIX GLASS HEIGHT	26958 (or) 29127		FH-82mm	90°-90°	02	
22	PVC GROVE COVER PROFILE	GEX.AG-30101		FW-58mm	45°-45°	01	REFER THE DETAILS- 7
23	PVC GROVE COVER PROFILE	GEX.AG-30101		FH-76.4mm	45°-90°	02	
24	PVC INTR. PROFILE	GEX.AG-30102		FH-68mm	90°-90°	01	REFER THE DETAILS- 6
25	OUTER GASKET	GEX.AG-20107		FH		04	
				FW		02	
26	SASH GASKET	GEX.AG-20101 (OR) GEX.AG-20110	(OR)	FH		04	(Gasket at sash & interlock) GEX.AG-20101 - For Lift and slide GEX.AG-20110 - For Normal slide
				FW/2		04	
27	INTER.GASKET	GEX.AG-20102		FH		02	
28	COVER GASKET	GEX.AG-20103		FH		04	
				FW/2		04	
29	BRUSH	GEX.AG-20110		FH		01	Brush at cover profiles
				FW/2		02	
30	GLAZING GASKETS	GEX.AG-20104 GEX.AG-20106 GEX.AG-20108	3 & 4 mm 5 & 6 mm 7 & 8 mm	FH		04	Based on Glass Selection
				FW		02	

PART LIST

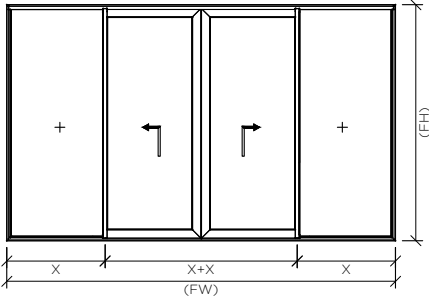
SL.NO	NAME	ARTICLE NO.	SYMBOL	QTY	FIXING REFRANCE	SL.NO	NAME	ARTICLE NO.	SYMBOL	QTY	FIXING REFRANCE
01	LATERAL COVER	GEX.AG-40101		01 SET	REFER THE DETAILS- 12	10	LS BOTTOM SEAL	GEX.AG-40111 (ONLY FOR L & S)		01 NOS	REFER THE DETAILS- 11
02	TOP & BOTTOM COVER	GEX.AG-40102		01 SET		11	TOP SEALING PART	GEX.AG-40112		01 NOS	
03	FIN COVER TO & BOTTOM	GEX.AG-40103		01 SET		REFER THE DETAILS- 11	12	TRACK SEAL	GEX.AG-40113		02 NOS
04	DRIP BAR COVER	GEX.AG-40104		01 SET	REFER THE DETAILS- 12	13	EPDM HOLDER	GEX.AG-40115 (ONLY FOR L & S)		04 NOS	REFER THE DETAILS- 13
05	SKIRTING PROFILE COVER	GEX.AG-40105		01 SET		14	SL BOTTOM SEAL	GEX.AG-40114		01 NOS	REFER THE DETAILS- 11 & 15 (ONLY FOR SL)
06	DRAINAGE PIPE	GEX.AG-40106	@ EVERY 400MM OF FW		REFER THE DETAILS- 10	16	WHEEL SUPPORT	GEX.AG-40109		02 NOS	REFER THE DETAILS-2 TO 5
07	DRAINAGE CAP	GEX.H05-AC-1017				16	SASH C. CLEAT	GEX.AG-50101		04 Nos.	
08	ANTI-LIFTING DEVICE	GEX.AG-40108		01 NOS	REFER THE DETAILS- 13	17	FR. C.CLEAT 12MM	GEX.AG-50102		08 Nos.	
09	GROVE SEAL	GEX.AG-40110		06 NOS	REFER THE DETAILS- 11	18	FR. C.CLEAT 45MM	GEX.AG-50103		04 Nos.	
						19	90° BRACKET L	GEX.AG-50104		02 Nos.	
						20	90° BRACKET R	GEX.AG-50105		02 Nos.	
						21	FIX POST BRACKET	GEX.AG-50107		02 Nos.	



SCHEME-C CUTTING LENGTHS & PARTS LIST [SLIDING (SL) & LIFT & SLIDE (LS)]

NOTE: UNIT HEIGHT- FH  
UNIT WIDTH - FW  
(FW/2= FRAME CENTER/INTERLOCK CENTER)

SL.NO	NAME	ARTICLE NO.	SYMBOL	CUTTING LENGTH	CUTTING ANGLES	QTY	MACHINING & FIXING REFERENCE
01	FRAME PROFILE (FW & FH)	70101		FW & FH	45°-45°	FH-02 FW-02	
02	SASH PROFILE (VERTICAL)	70105		FH-65mm	45°-45°	02	
03	SASH PROFILE (BOTTOM)	70105		(FW/4)-26mm	45°-90°	02	REFER THE DETAILS- 1 TO 6
04	SASH PROFILE (TOP)	70105		(FW/4)-26mm	135°-90°	02	
05	FIX PROFILE (FIX GLASS)	70103		FH-42mm	90°-90°	02	
06	INTER.SASH PROFILE	70104		FH-68mm	90°-90°	02	
07	ADAPTOR PROFILE	26959		FW-66.8mm	90°-90°	01	REFER THE DETAILS- 7
08	TRACK PROFILE	26957		FW-70mm	90°-90°	01	
09	BOTTOM COVER	29140		(FW/2)-40mm	90°-90°	01	REFER THE DETAILS- 8
10	TOP COVER	29141		(FW/2)-32.6mm	90°-90°	01	
11	INT. COVER (@70103)	26961		FH-71.3mm	90°-90°	02	REFER THE DETAILS- 4
12	INT. COVER (@70104)	26961		FH-65mm	90°-90°	02	
13	FIN. COVER (@70104)	26962		FH-68mm	90°-90°	02	
14	DRIP PROFILE	27115		FW-32mm	90°-90°	01	REFER THE DETAILS- 7
15	BARRIER PROFILE	27114		FW-6mm	90°-90°	01	
16	INT.LOCK PROFILE	27117		FH-62mm	90°-90°	02	REFER THE DETAILS- 6
17	BI-PART PROFILE	27116		FH-65mm	90°-90°	02	REFER THE DETAILS- 9 (ONLY FOR SLIDING)
18	GLAZING BAR SHUTTER WIDTH	26958 (or) 29127		(FW/4)-68.3mm	90°-90°	04	
19	GLAZING BAR SHUTTER HEIGHT	26958 (or) 29127		FH-235mm	90°-90°	04	
20	GLAZING BAR FIX GLASS WIDTH	26958 (or) 29127		(FW/4)-21mm	90°-90°	04	
21	GLAZING BAR FIX GLASS HEIGHT	26958 (or) 29127		FH-82mm	90°-90°	04	



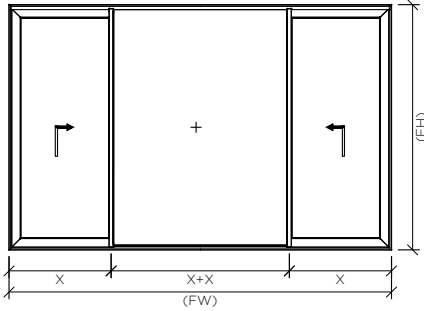
SCHEME-C CUTTING LENGTHS & PARTS LIST  
[SLIDING (SL) & LIFT & SLIDE (LS)]

NOTE: UNIT HEIGHT - FH  
UNIT WIDTH - FW  
(FW/2= FRAME CENTER/INTERLOCK CENTER)

SL.NO	NAME	ARTICLE NO.	SYMBOL	CUTTING	CUTTING ANGLES	QTY	MACHINING & FIXING REFERENCE
22	BI-PART PROFILE L & S	27215 ONLY FOR L & S		FH-65mm	90°-90°	01	REFER THE DETAILS- 9 (ONLY FOR L & S)
23	PVC GROVE COVER PROFILE	GEX.AG-30101		FH-65mm FW-58mm	90°-90° 45°-45°	01	REFER THE DETAILS- 7 & 9
24	PVC GROVE COVER PROFILE	GEX.AG-30101		FH-76.4mm	45°-90°	02	
25	PVC INTR. PROFILE	GEX.AG-30102		FH-68mm	90°-90°	02	REFER THE DETAILS- 6
26	OUTER GASKET	GEX.AG-20107		FH FW/2		08 02	
27	SASH GASKET	GEX.AG-20101 (OR) GEX.AG-20110		FH FW/2		08 04	(Gasket at sash & interlock) GEX.AG-20101 - For Lift and slide GEX.AG-20110 - For Normal slide
28	INTER.GASKET	GEX.AG-20102		FH		04	
29	COVER GASKET	GEX.AG-20103		FW/2		02	
30	BI-PARTING GASKET	GEX.AG-20109		FH		02	
31	BRUSH	GEX.AG-20110		FW/2		02	
32	GLAZING GASKETS	GEX.AG-20104 GEX.AG-20106 GEX.AG-20108	3 & 4 mm 5 & 6 mm 7 & 8 mm	FH FW/2		08 02	Based on Glass Selection

PART LIST

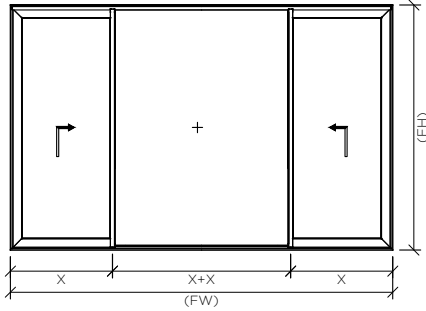
SL.NO	NAME	ARTICLE NO.	SYMBOL	QTY	FIXING REFERENCE	SL.NO	NAME	ARTICLE NO.	SYMBOL	QTY	FIXING REFERENCE
01	LATERAL COVER	GEX.AG-40101		02 SET	REFER THE DETAILS- 12	10	LS BOTTOM SEAL	GEX.AG-40111 (ONLY FOR L & S)		02 NOS	REFER THE DETAILS- 11
02	TOP & BOTTOM COVER	GEX.AG-40102		02 SET		11	TOP SEALING PART	GEX.AG-40112		02 NOS	
03	FIN COVER TO & BOTTOM	GEX.AG-40103		02 SET	REFER THE DETAILS- 11	12	TRACK SEAL	GEX.AG-40113		04 NOS	REFER THE DETAILS- 11
04	DRIP BAR COVER	GEX.AG-40104		01 SET	REFER THE DETAILS- 12	13	EPDM HOLDER	GEX.AG-40115 (ONLY FOR L & S)		08 NOS	REFER THE DETAILS- 13
05	SKIRTING PROFILE COVER	GEX.AG-40105		01 SET		14	SL. BI-PART BR.	GEX.AG-50106		03 Nos.	REFER THE DETAILS- 9, 11 & 15 (ONLY FOR SL)
06	DRAINAGE PIPE	GEX.AG-40106	@ EVERY 400MM OF FW		REFER THE DETAILS- 10	15	SL BOTTOM SEAL	GEX.AG-40114		02 NOS	
07	DRAINAGE CAP	GEX.H05-AC-1017					16	WHEEL SUPPORT	GEX.AG-40109		04 NOS
08	ANTI-LIFTING DEVICE	GEX.AG-40108		02 NOS	REFER THE DETAILS- 13	17	SASH C. CLEAT	GEX.AG-50101		08 Nos.	REFER THE DETAILS-2 TO 5
09	GROVE SEAL	GEX.AG-40110		12 NOS	REFER THE DETAILS- 11	18	FR. C.CLEAT 12MM	GEX.AG-50102		08 Nos.	
						19	FR. C.CLEAT 45MM	GEX.AG-50103		04 Nos.	
						20	90° BRACKET L	GEX.AG-50104		04 Nos.	
						21	90° BRACKET R	GEX.AG-50105		04 Nos.	
						22	FIX POST BRACKET	GEX.AG-50107		04 Nos.	



### SCHEME-K CUTTING LENGTHS & PARTS LIST [SLIDING (SL) & LIFT & SLIDE (LS)]

NOTE: UNIT HEIGHT - FH  
UNIT WIDTH - FW  
(FW/2= FRAME CENTER/INTERLOCK CENTER)

SL.NO	NAME	ARTICLE NO.	SYMBOL	CUTTING LENGTH	CUTTING ANGLES	QTY	MACHINING & FIXING REFRANCE
01	FRAME PROFILE (FW & FH)	70101		FW & FH	45°-45°	FH-02 FW-02	
02	SASH PROFILE (VERTICAL)	70105		FH-65mm	45°-45°	02	
03	SASH PROFILE (BOTTOM)	70105		(FW/4)-26mm	45°-90°	02	
04	SASH PROFILE (TOP)	70105		(FW/4)-26mm	135°-90°	02	REFER THE DETAILS- 1 TO 6
05	FIX PROFILE (FIX GLASS)	70103		FH-42mm	90°-90°	02	
06	INTER.SASH PROFILE	70104		FH-68mm	90°-90°	02	
07	ADAPTOR PROFILE	26959		FW-66.8mm	90°-90°	01	
08	TRACK PROFILE	26957		FW-70mm	90°-90°	01	REFER THE DETAILS- 7
09	BOTTOM COVER	29140		(FW/4)-47mm	90°-90°	02	
10	SIDE COVER	26960		FH-71.3mm	90°-90°	02	
11	TOP COVER	29141		(FW/4)-37.3mm	90°-90°	02	REFER THE DETAILS- 8
12	INT. COVER (@70103)	26961		FH-71.3mm	90°-90°	02	
13	INT. COVER (@70104)	26961		FH-65mm	90°-90°	02	REFER THE DETAILS- 4
14	FIN. COVER (@70104)	26962		FH-68mm	90°-90°	02	REFER THE DETAILS- 6
15	DRIP PROFILE	27115		FW-32mm	90°-90°	01	
16	BARRIER PROFILE	27114		FW-6mm	90°-90°	01	REFER THE DETAILS- 7
17	INT.LOCK PROFILE	27117		FH-62mm	90°-90°	02	REFER THE DETAILS- 6
18	GLAZING BAR SHUTTER WIDTH	26958 (or) 29127		(FW/4)-91mm	90°-90°	04	
19	GLAZING BAR SHUTTER HEIGHT	26958 (or) 29127		FH-235mm	90°-90°	04	
20	GLAZING BAR FIX GLASS WIDTH	26958 (or) 29127		FW/2	90°-90°	02	



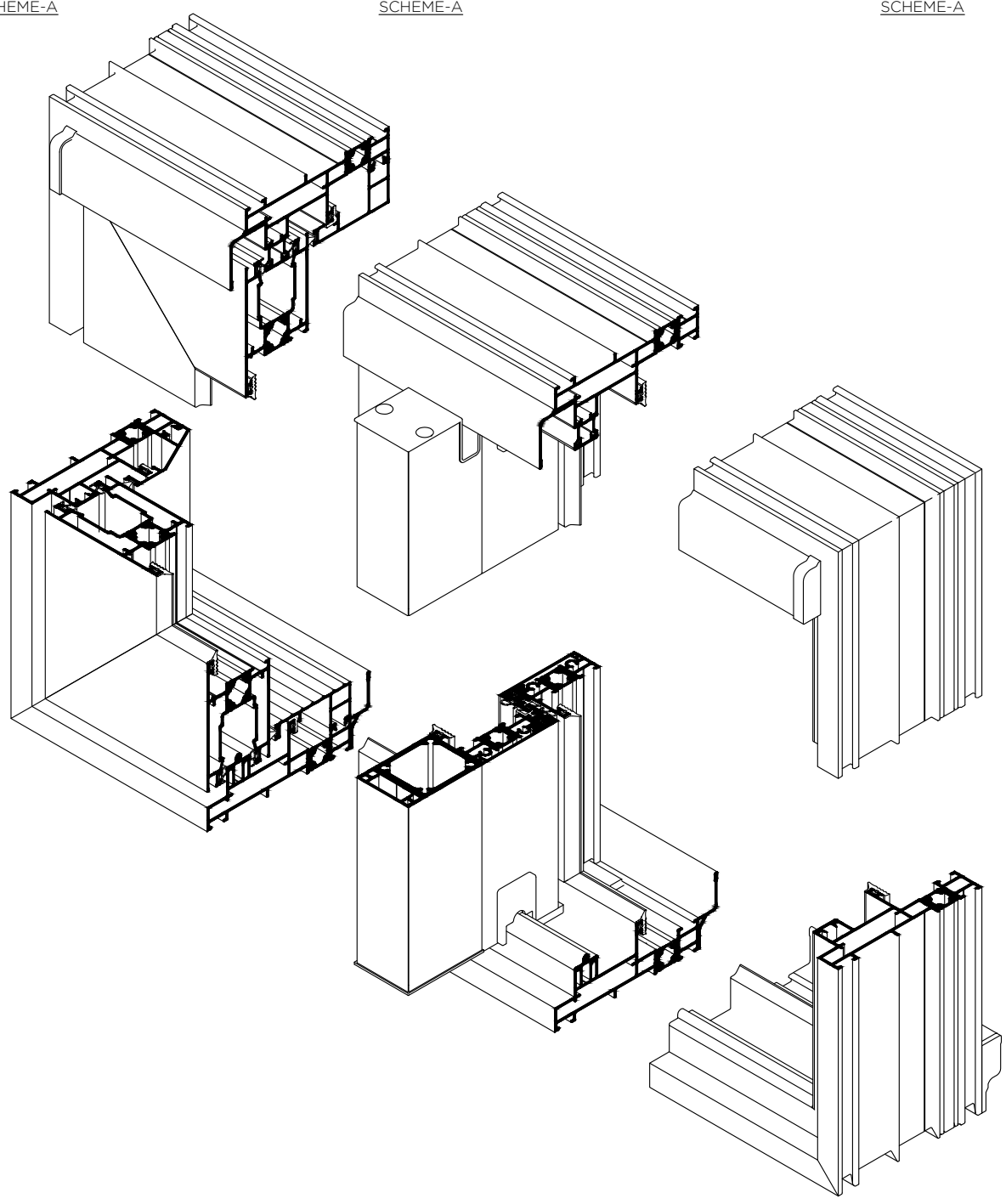
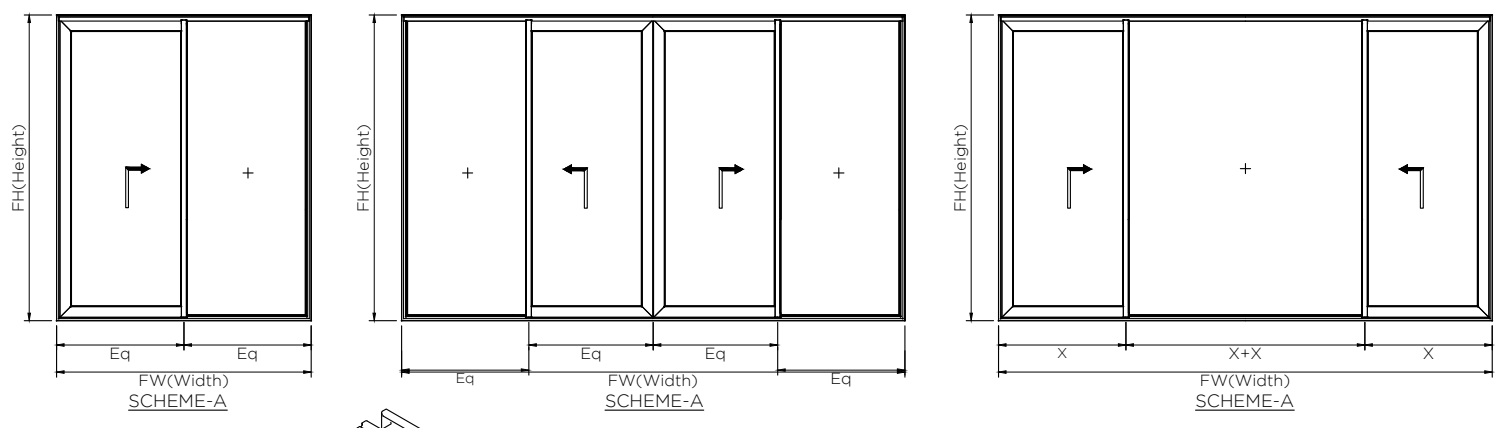
SCHEME-K CUTTING LENGTHS & PARTS LIST  
[SLIDING (SL) & LIFT & SLIDE (LS)]

NOTE: UNIT HEIGHT - FH  
UNIT WIDTH - FW  
(FW/2= FRAME CENTER/INTERLOCK CENTER)

SL.NO	NAME	ARTICLE NO.	SYMBOL	CUTTING	CUTTING ANGLES	QTY	MACHINING & FIXING REFERENCE
21	GLAZING BAR FIX GLASS HEIGHT	26958 (or) 29127		FH-82mm	90°-90°	02	
22	PVC GROVE COVER PROFILE	GEX.AG-30101		FW-58mm	45°-45°	01	REFER THE DETAILS- 7
23	PVC GROVE COVER PROFILE	GEX.AG-30101		FH-76.4mm	45°-90°	02	
24	PVC INTR. PROFILE	GEX.AG-30102		FH-68mm	90°-90°	02	REFER THE DETAILS- 6
25	OUTER GASKET	GEX.AG-20107		FH		06	(Gasket at sash & interlock) GEX.AG-20101 - For Lift and slide GEX.AG-20110 - For Normal slide
26	SASH GASKET	GEX.AG-20101 (OR) GEX.AG-20110		FW		02	
27	INTER.GASKET	GEX.AG-20102		FH		08	
28	COVER GASKET	GEX.AG-20103		FH		04	
29	BRUSH	GEX.AG-20110		FW/2		02	Brush at cover profiles
30	GLAZING GASKETS	GEX.AG-20104 GEX.AG-20106 GEX.AG-20108		FH x 06 Meter FW x 02 Meter		02 02 02	Based on Glass Selection

PART LIST

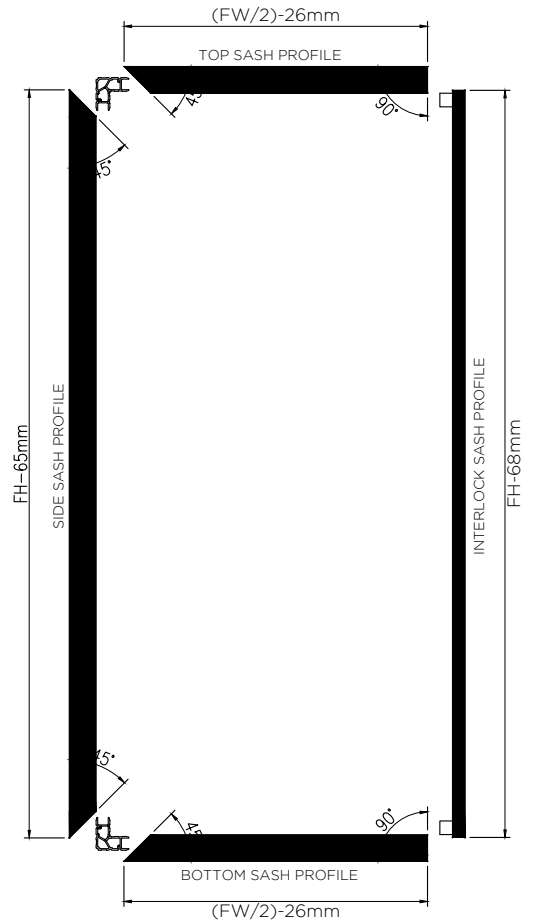
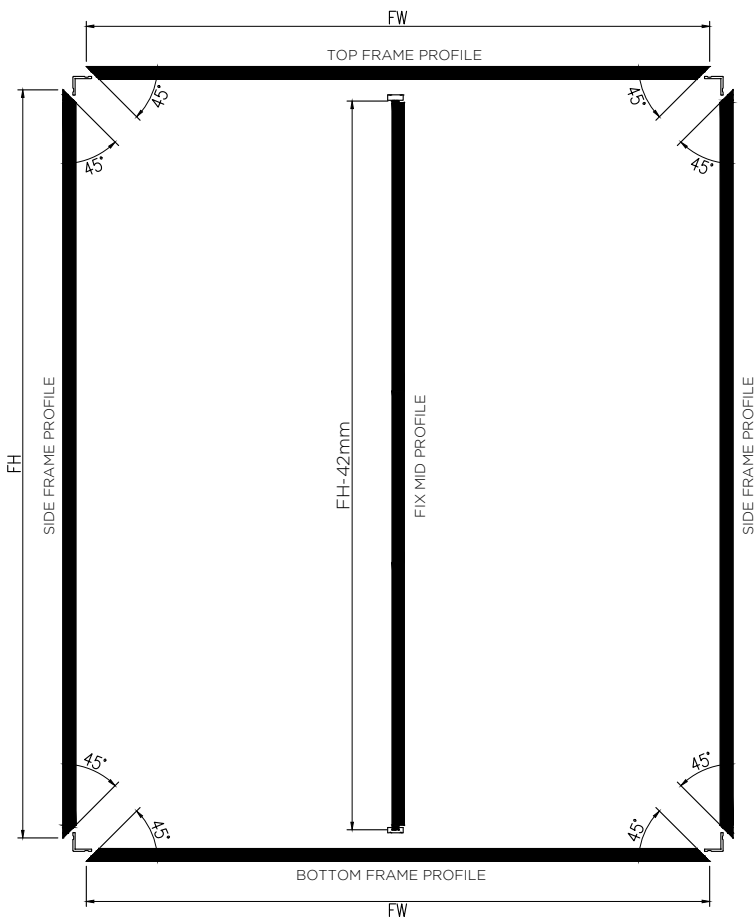
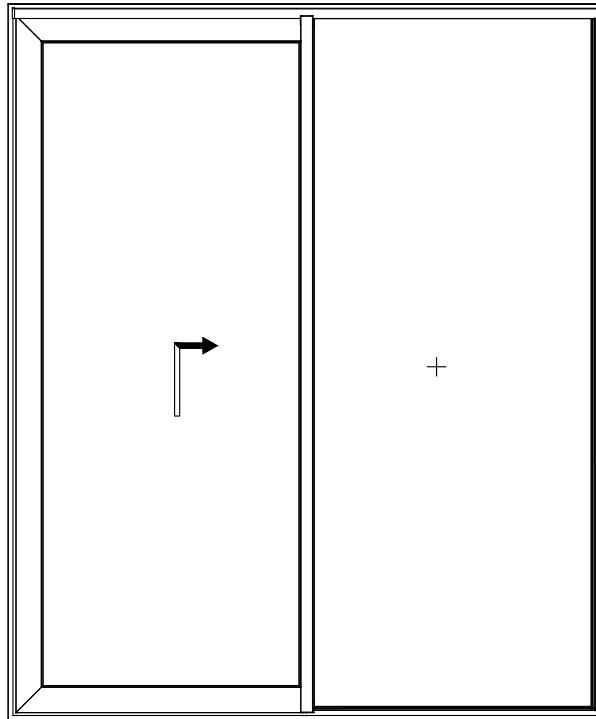
SL.NO	NAME	ARTICLE NO.	SYMBOL	QTY	FIXING REFERENCE	SL.NO	NAME	ARTICLE NO.	SYMBOL	QTY	FIXING REFERENCE
01	LATERAL COVER	GEX.AG-40101		02 SET	REFER THE DETAILS- 12	10	LS BOTTOM SEAL	GEX.AG-40111 (ONLY FOR L & S)		02 NOS	REFER THE DETAILS- 11
02	TOP & BOTTOM COVER	GEX.AG-40102		02 SET		11	TOP SEALING PART	GEX.AG-40112		02 NOS	
03	FIN COVER TO & BOTTOM	GEX.AG-40103		02 SET	REFER THE DETAILS- 11	12	TRACK SEAL	GEX.AG-40113		04 NOS	REFER THE DETAILS- 11
04	DRIP BAR COVER	GEX.AG-40104		01 SET	REFER THE DETAILS- 12	13	EPDM HOLDER	GEX.AG-40115 (ONLY FOR L & S)		08 NOS	REFER THE DETAILS- 13
05	SKIRTING PROFILE COVER	GEX.AG-40105		01 SET		14	SL BOTTOM SEAL	GEX.AG-40114		02 NOS	REFER THE DETAILS- 11 & 15 (ONLY FOR SL)
06	DRAINAGE PIPE	GEX.AG-40106	@ EVERY 400MM OF FW		15	WHEEL SUPPORT	GEX.AG-40109		04 NOS		
07	DRAINAGE CAP	GEX.H05-AC-1017		REFER THE DETAILS- 10	16	SASH C. CLEAT	GEX.AG-50101		08 Nos.	REFER THE DETAILS-2 TO 5	
08	ANTI-LIFTING DEVICE	GEX.AG-40108	02 NOS	REFER THE DETAILS- 13	17	FR. C.CLEAT 12MM	GEX.AG-50102		08 Nos.		
09	GROVE SEAL	GEX.AG-40110	12 NOS	REFER THE DETAILS- 11	18	FR. C.CLEAT 45MM	GEX.AG-50103		04 Nos.		
					19	90° BRACKET L	GEX.AG-50104		04 Nos.		
					20	90° BRACKET R	GEX.AG-50105		04 Nos.		
					21	FIX POST BRACKET	GEX.AG-50107		04 Nos.		



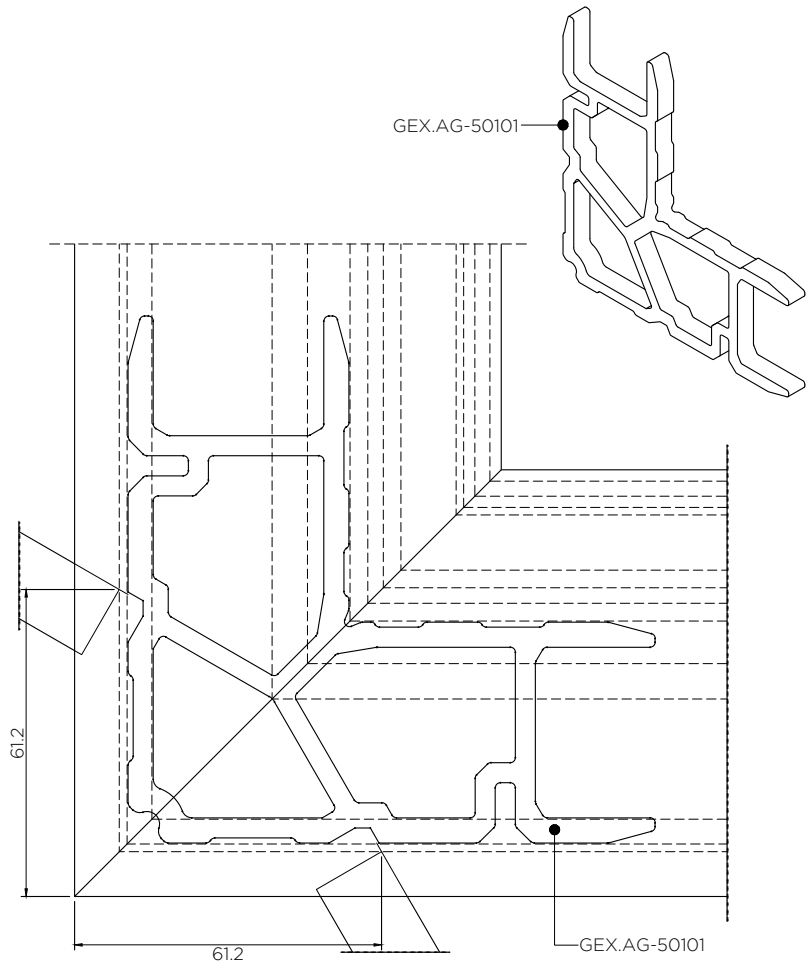
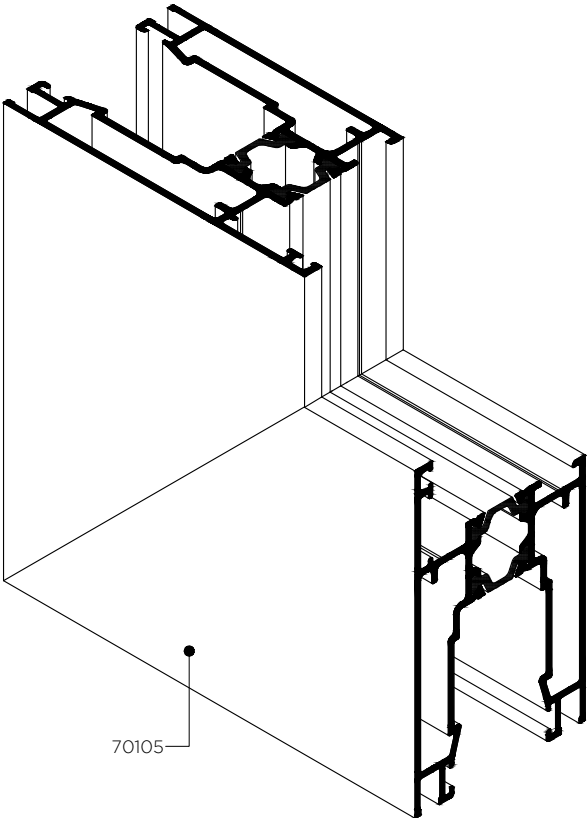
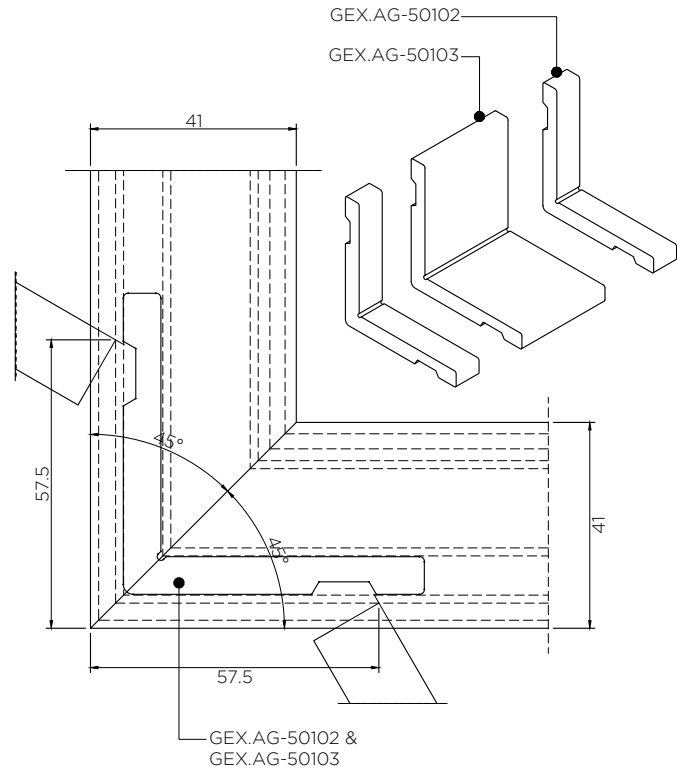
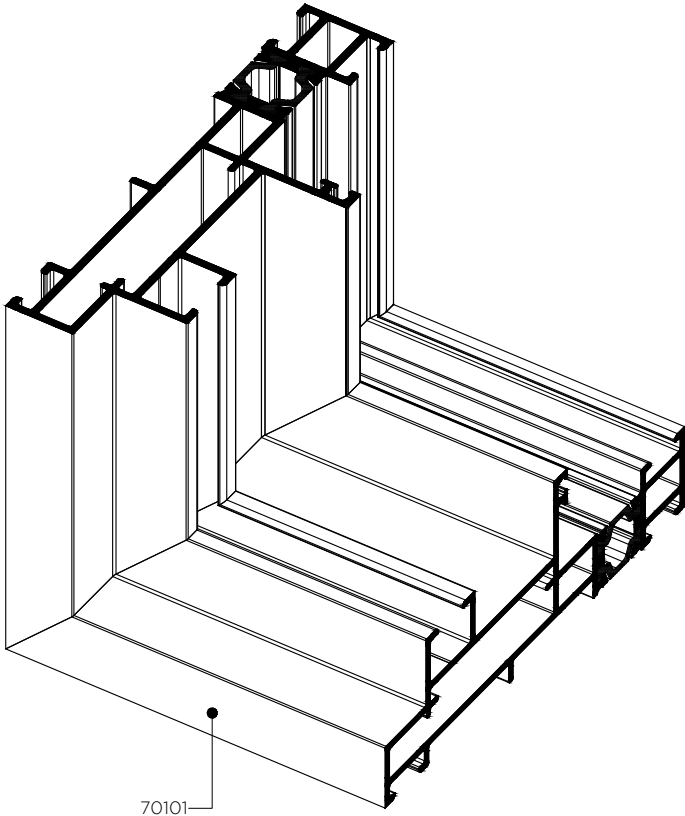


MACHINING & FIXING REFERENCE

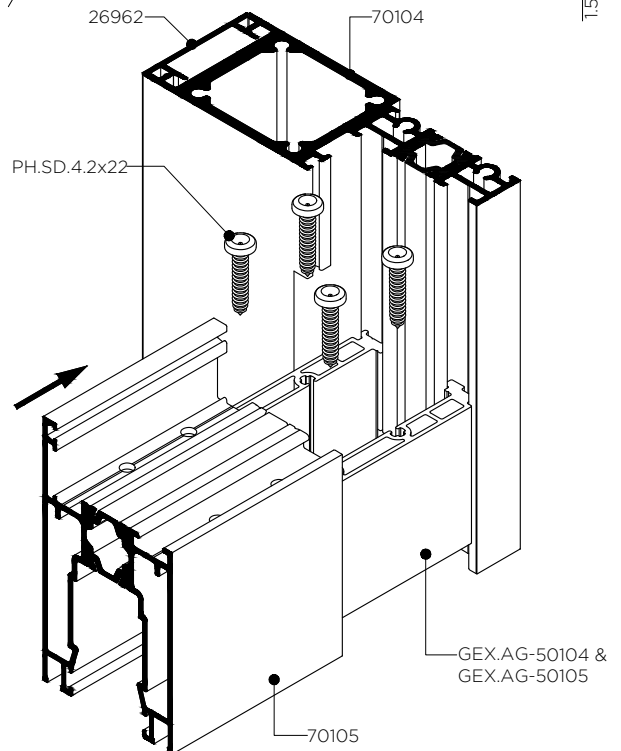
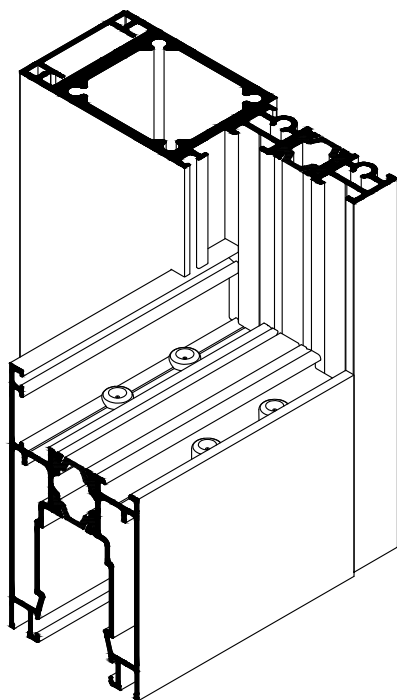
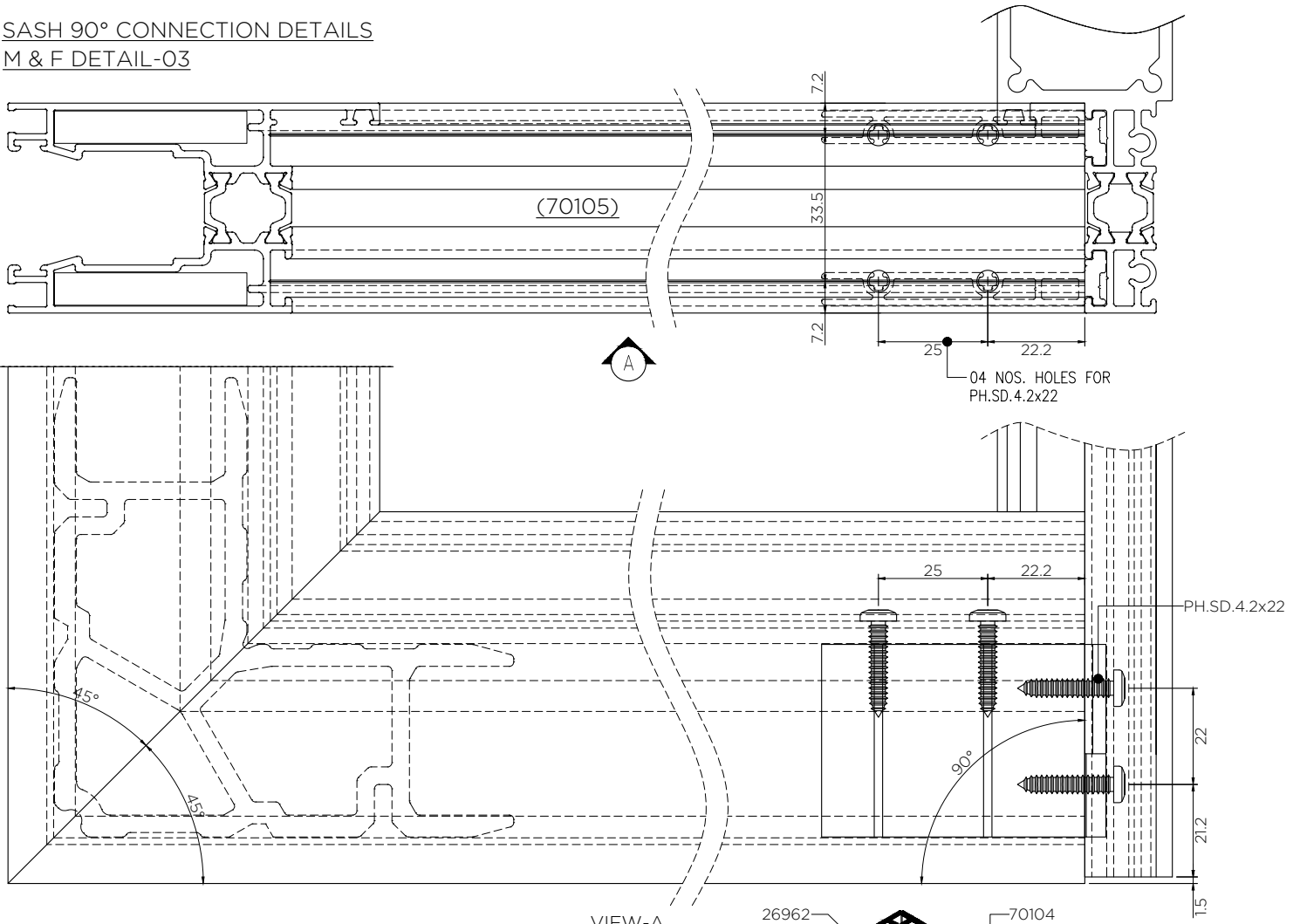
M & F DETAIL-01



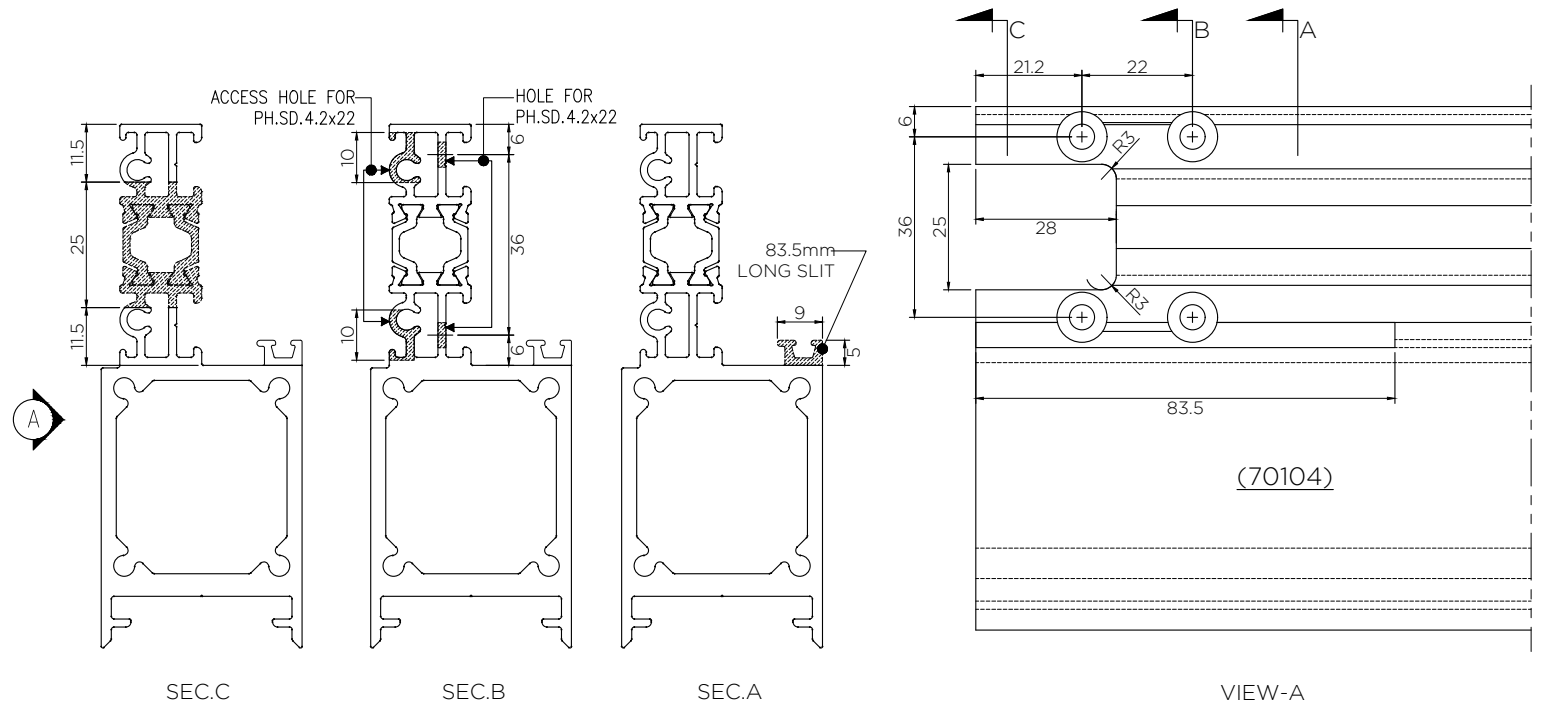
MACHINING & FIXING REFERENCE  
M & F DETAIL-02



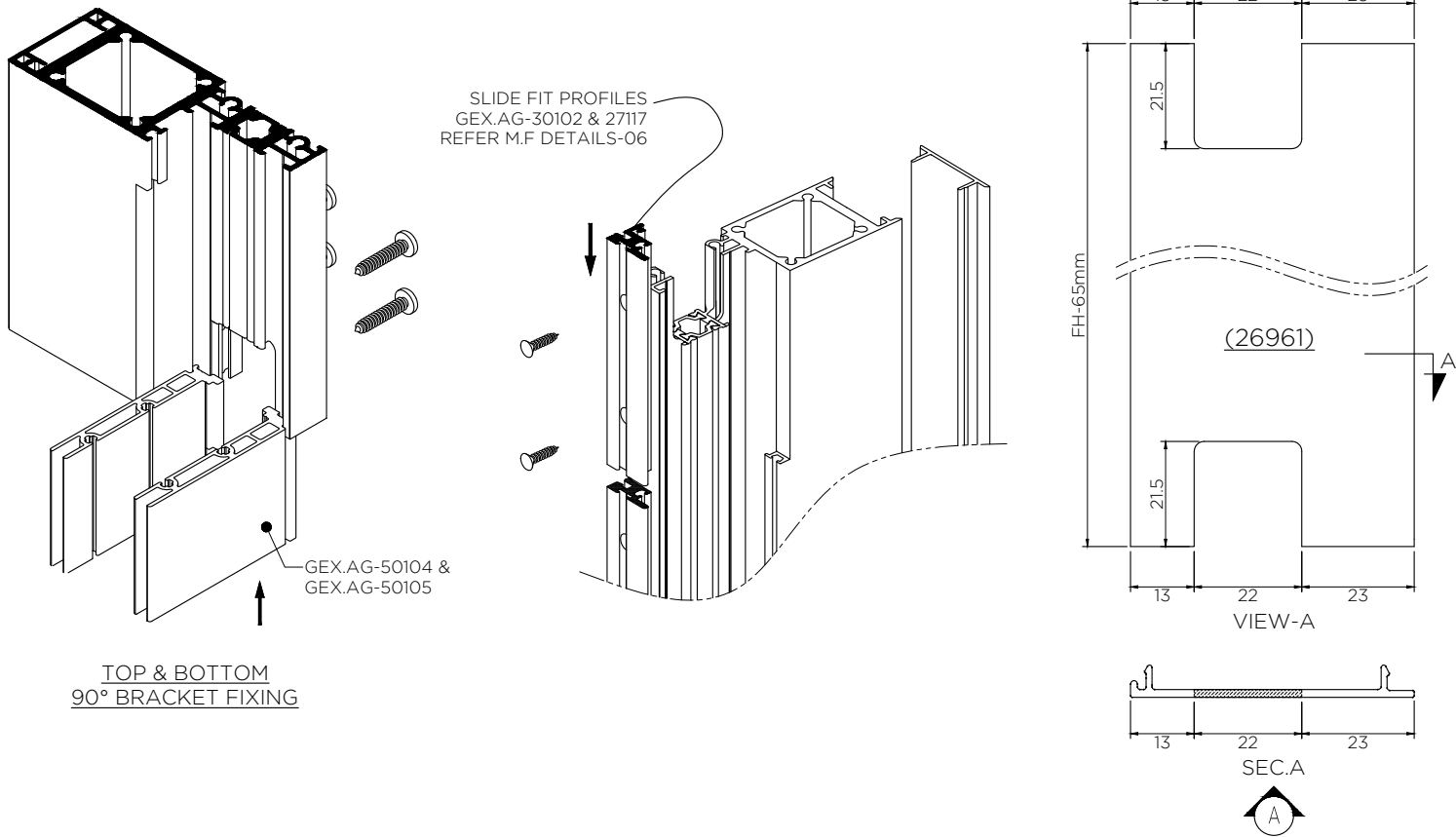
SASH 90° CONNECTION DETAILS  
M & F DETAIL-03



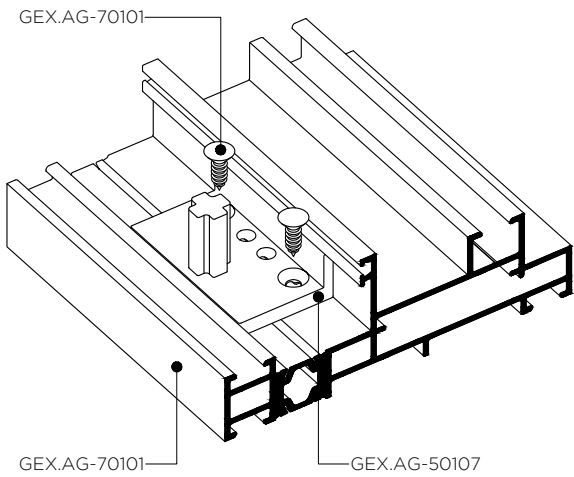
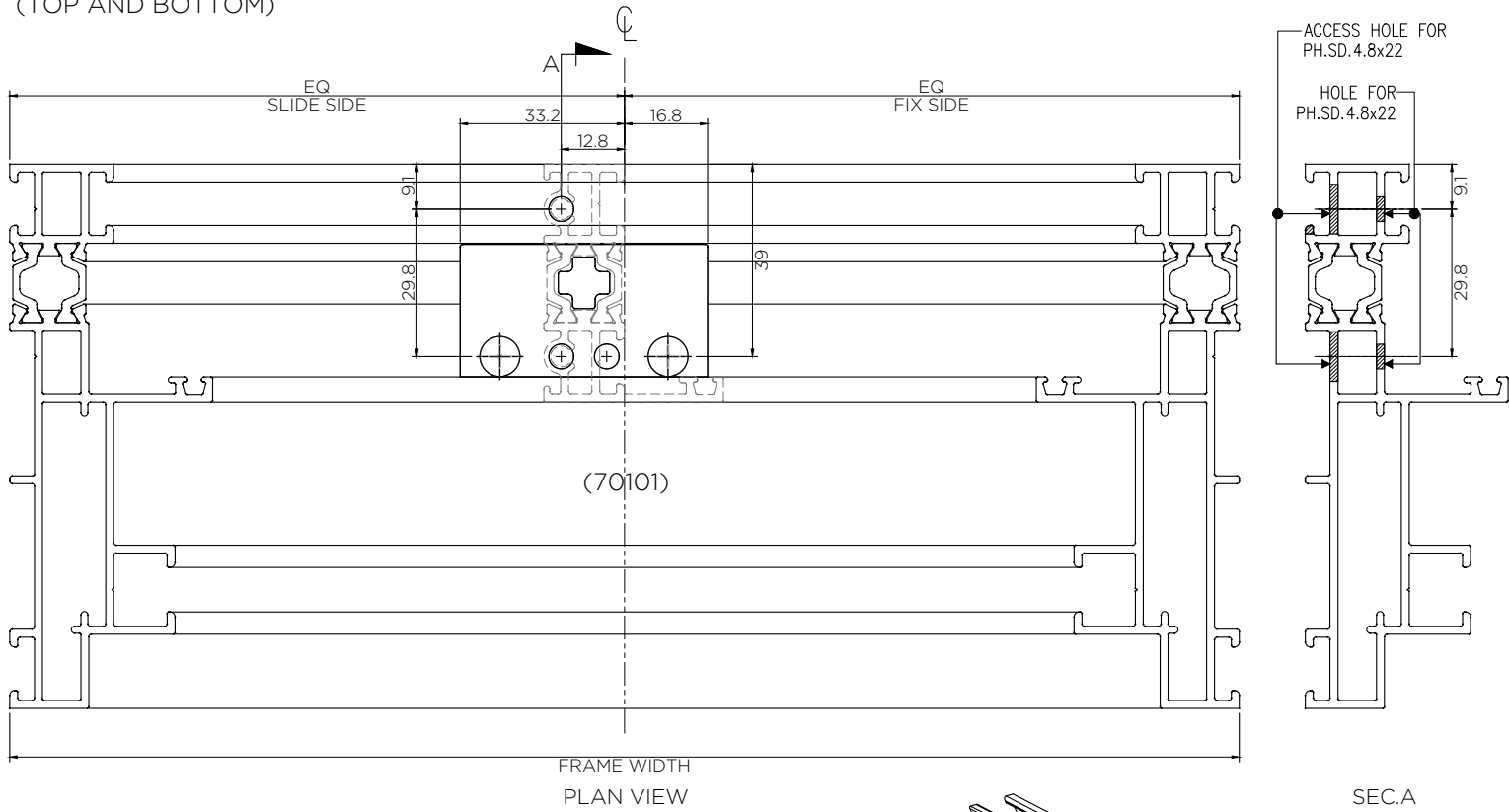
**INTER LOCK PROFILE M & F DETAIL-04**  
(TOP AND BOTTOM)



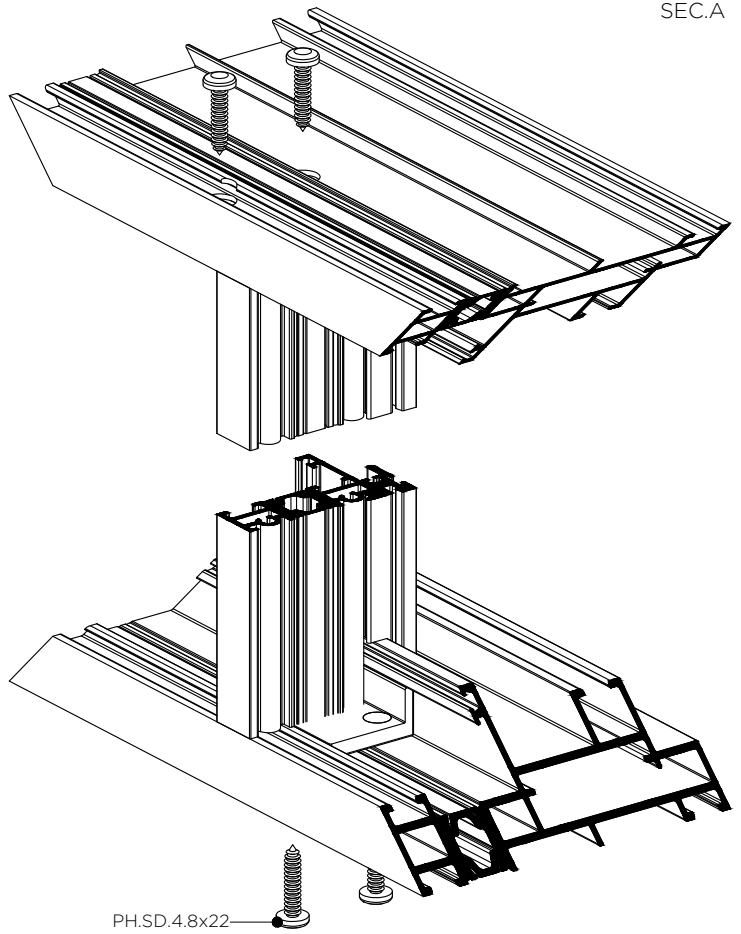
TOP AND BOTTOM MACHINING DETAILS



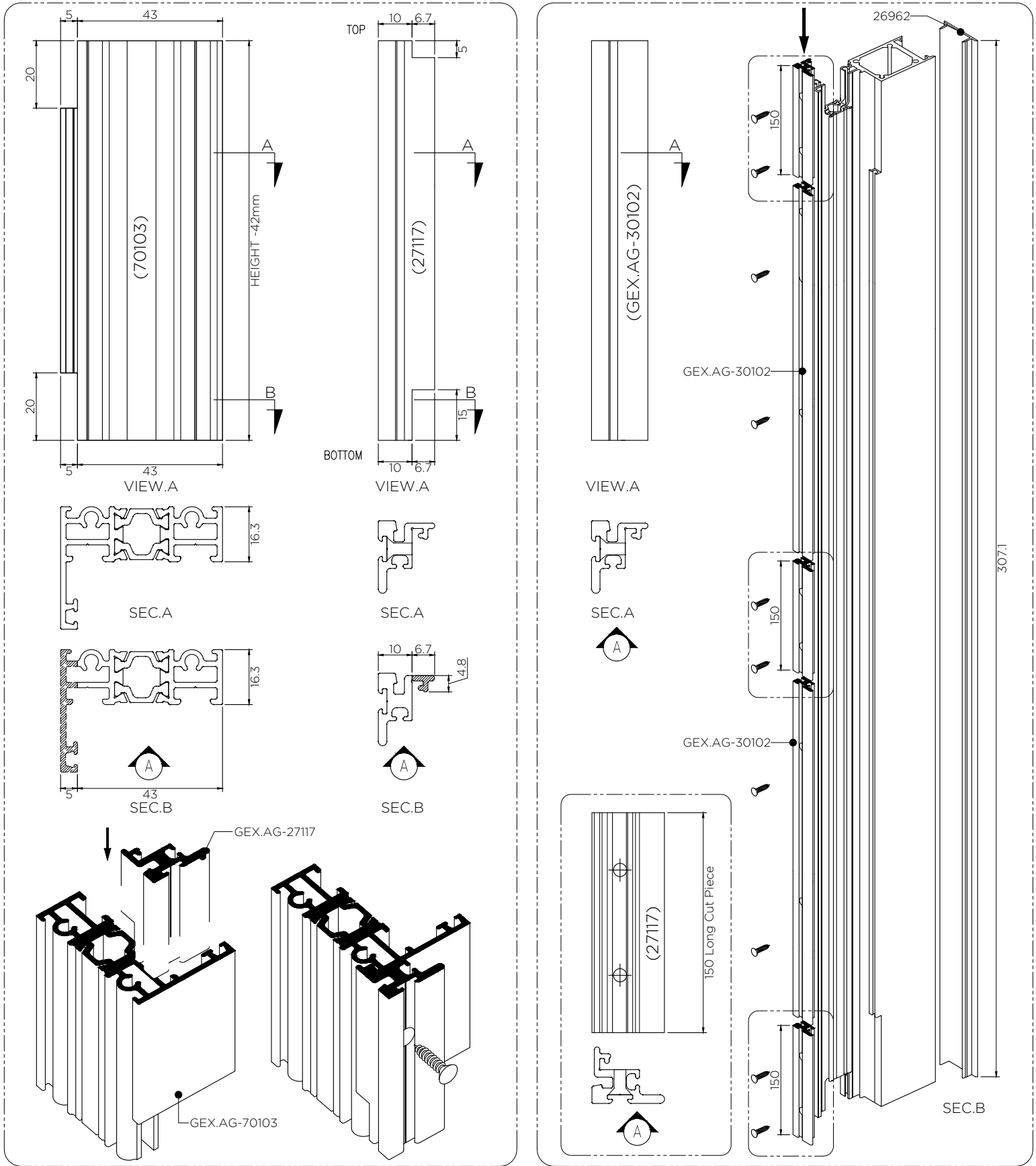
FIX POST PROFILE WITH BRACKET M & F DETAIL-05  
(TOP AND BOTTOM)



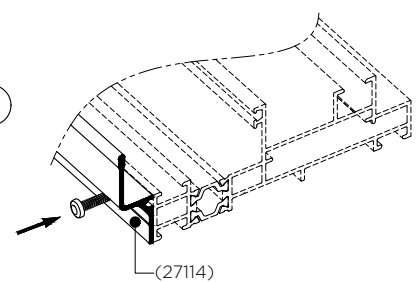
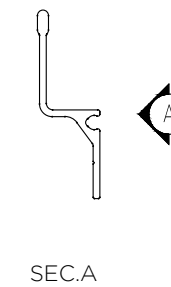
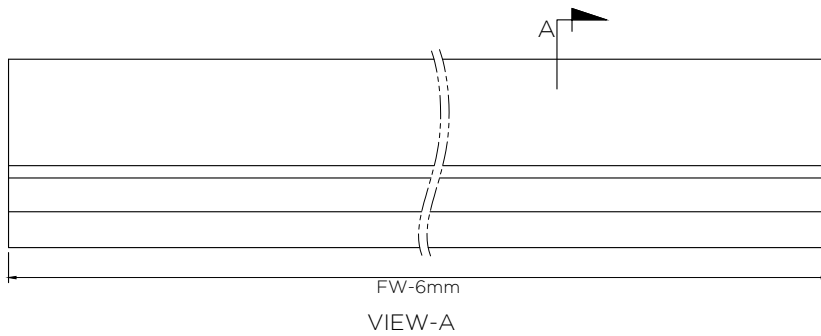
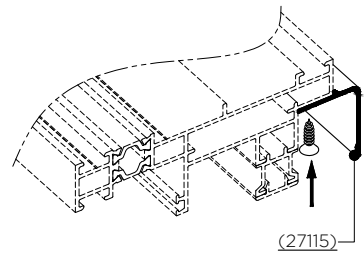
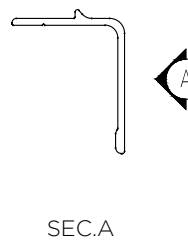
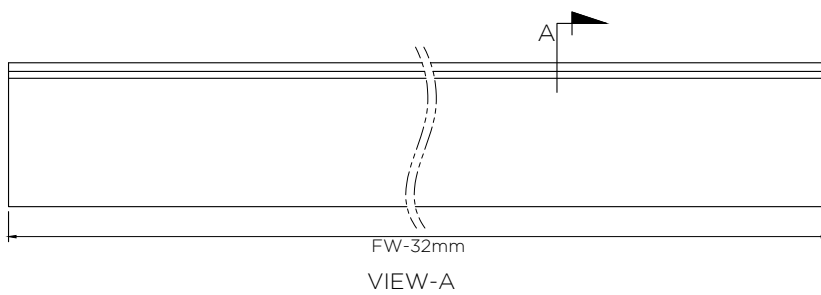
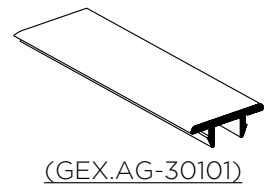
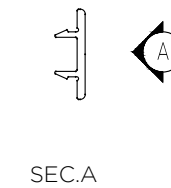
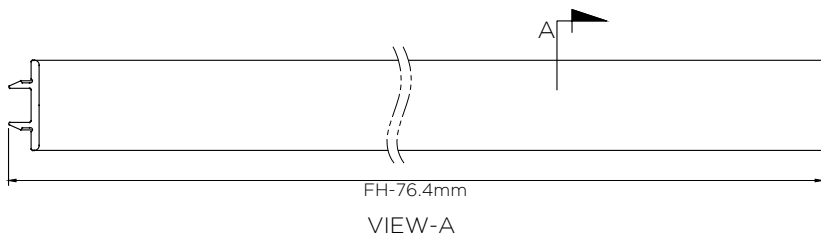
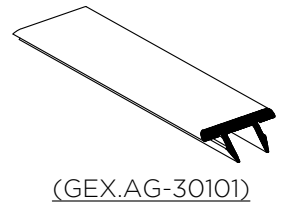
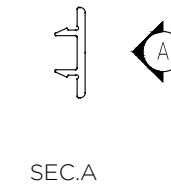
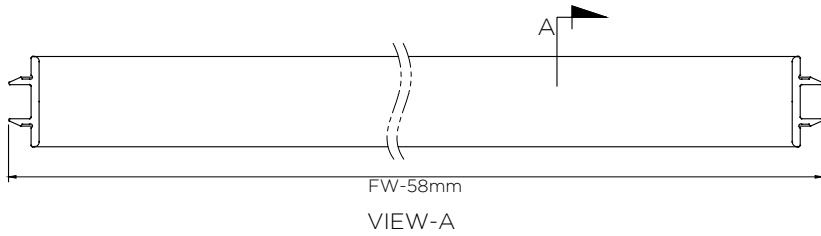
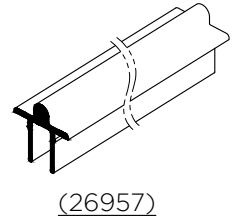
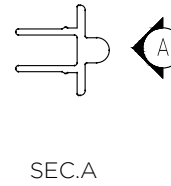
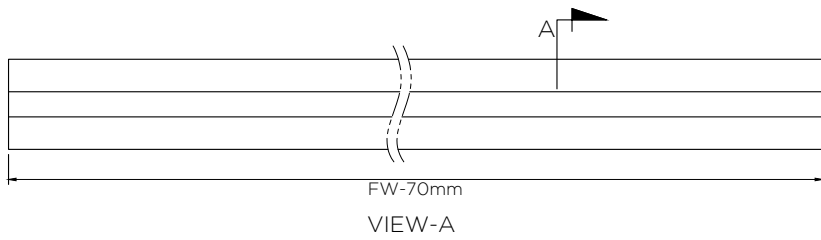
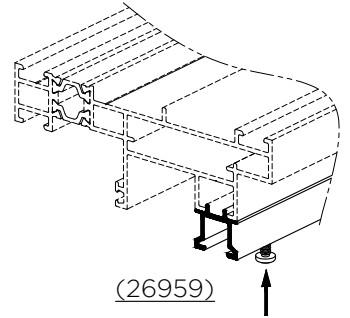
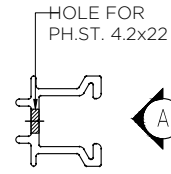
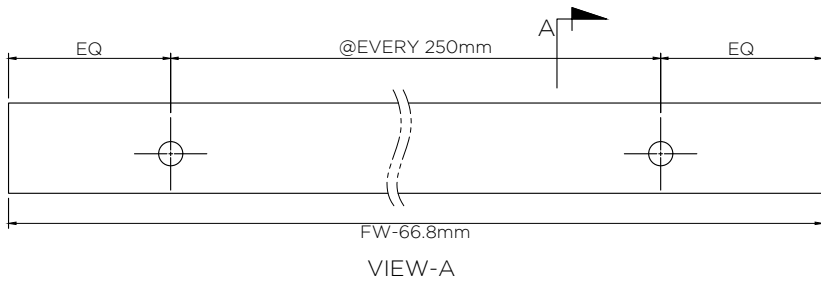
TOP & BOTTOM  
FIX POST BRACKET FIXING



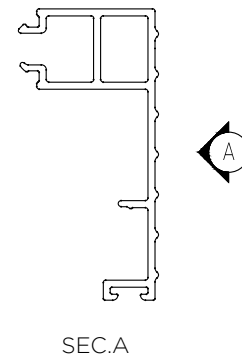
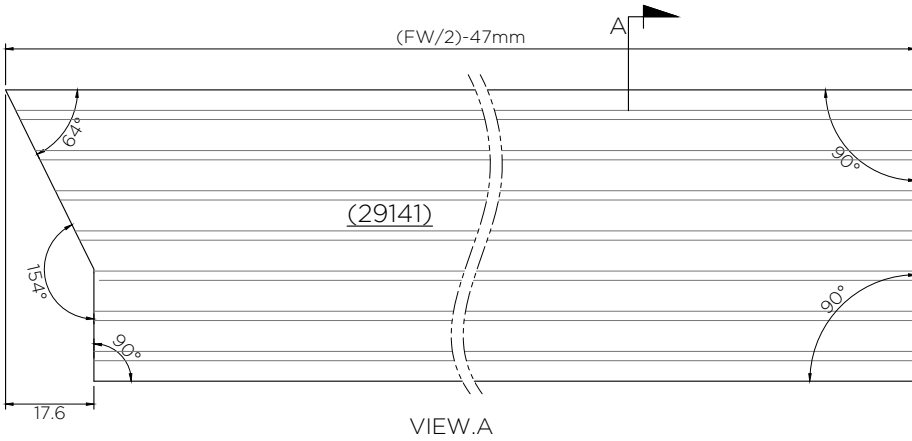
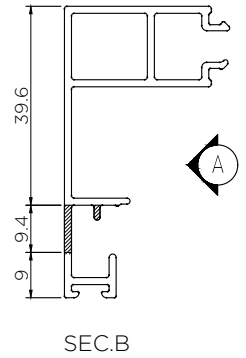
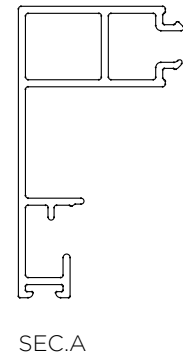
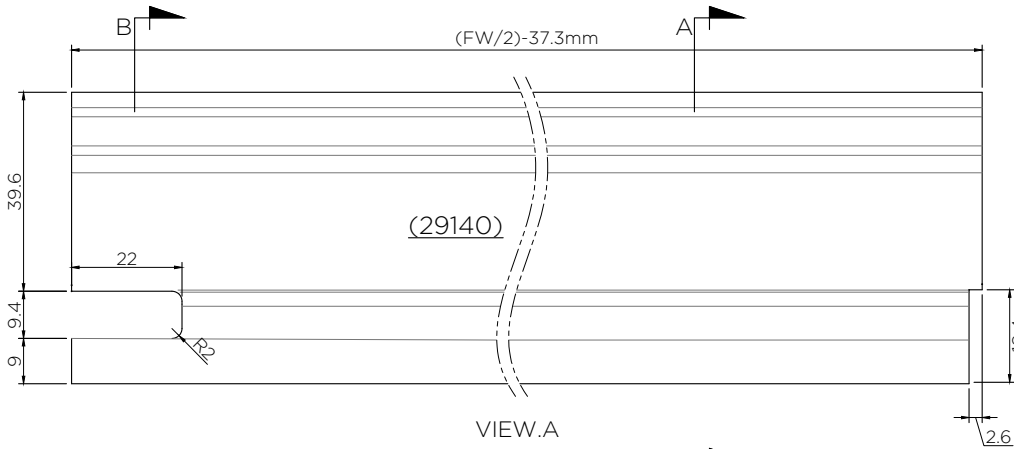
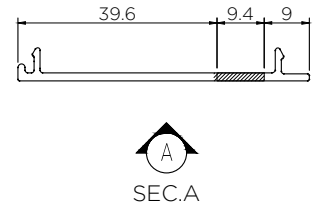
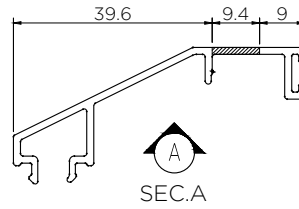
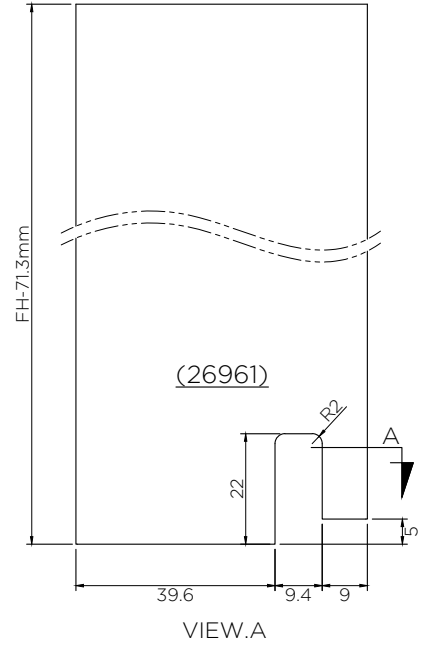
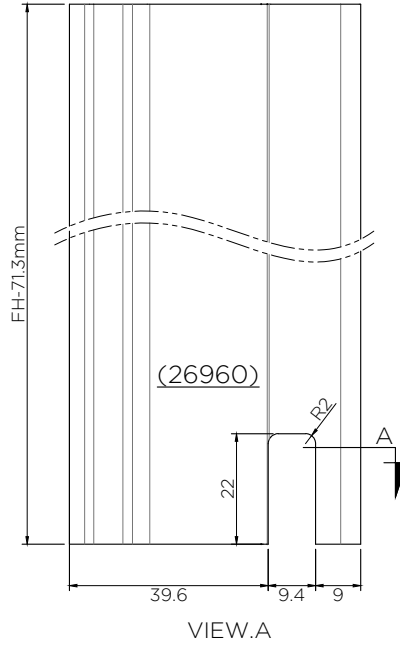
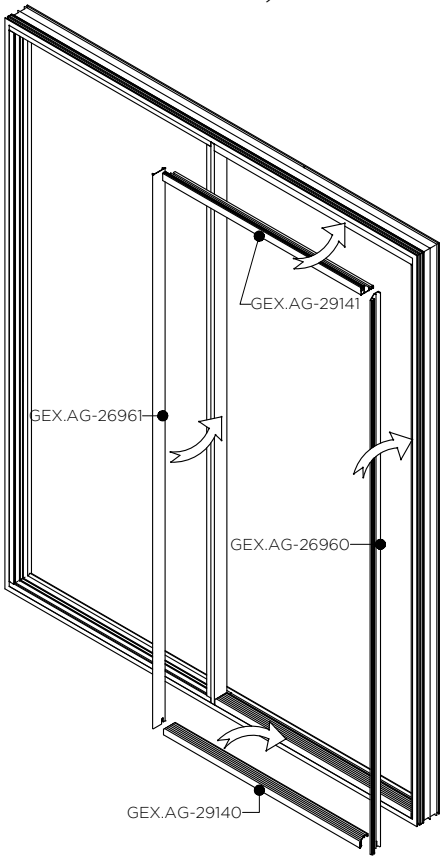
FIX POST PROFILE WITH BRACKET M & F DETAIL-06  
(TOP AND BOTTOM)



M & F DETAIL-07

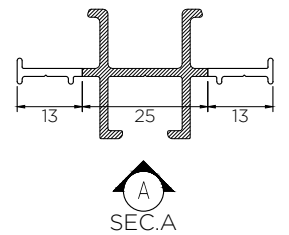
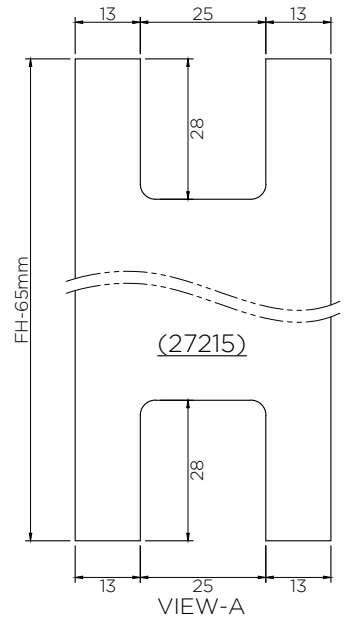
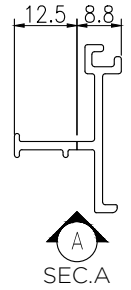
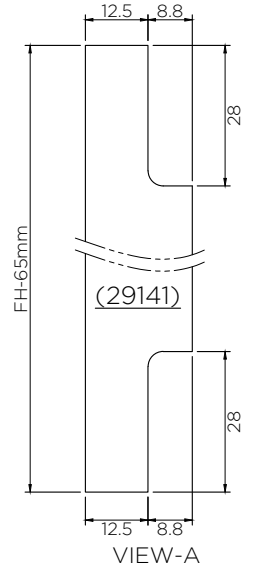
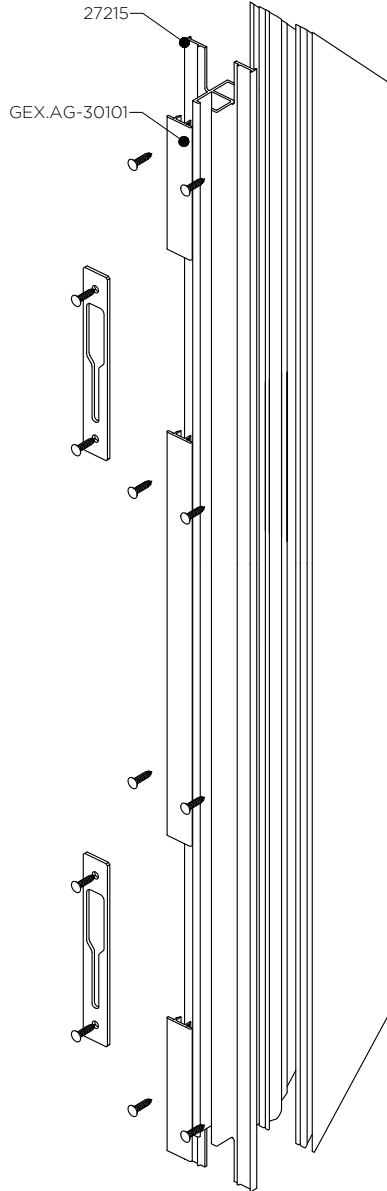
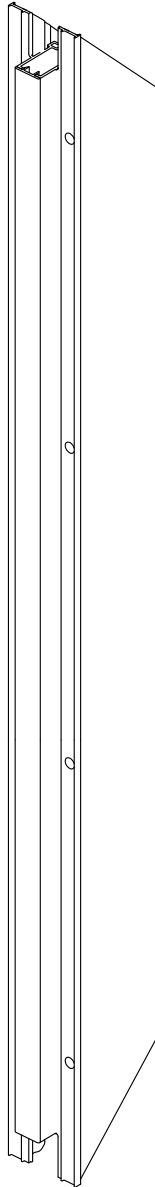
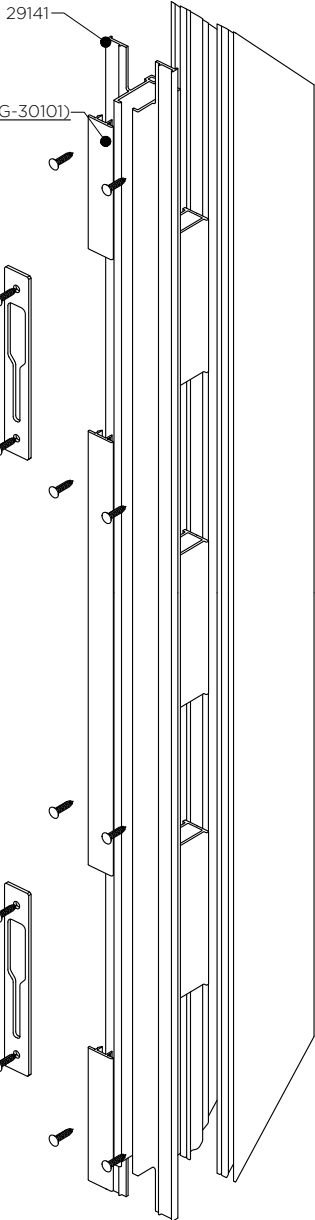
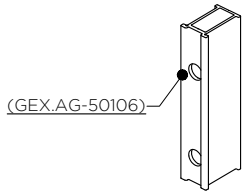
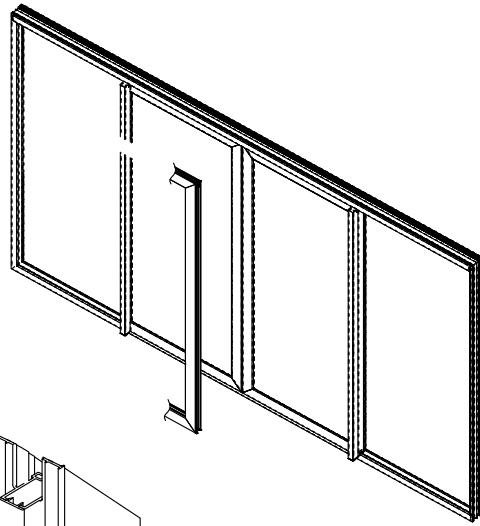


COVERS M & F DETAIL-08  
(TOP,BOTTOM AND SIDES)

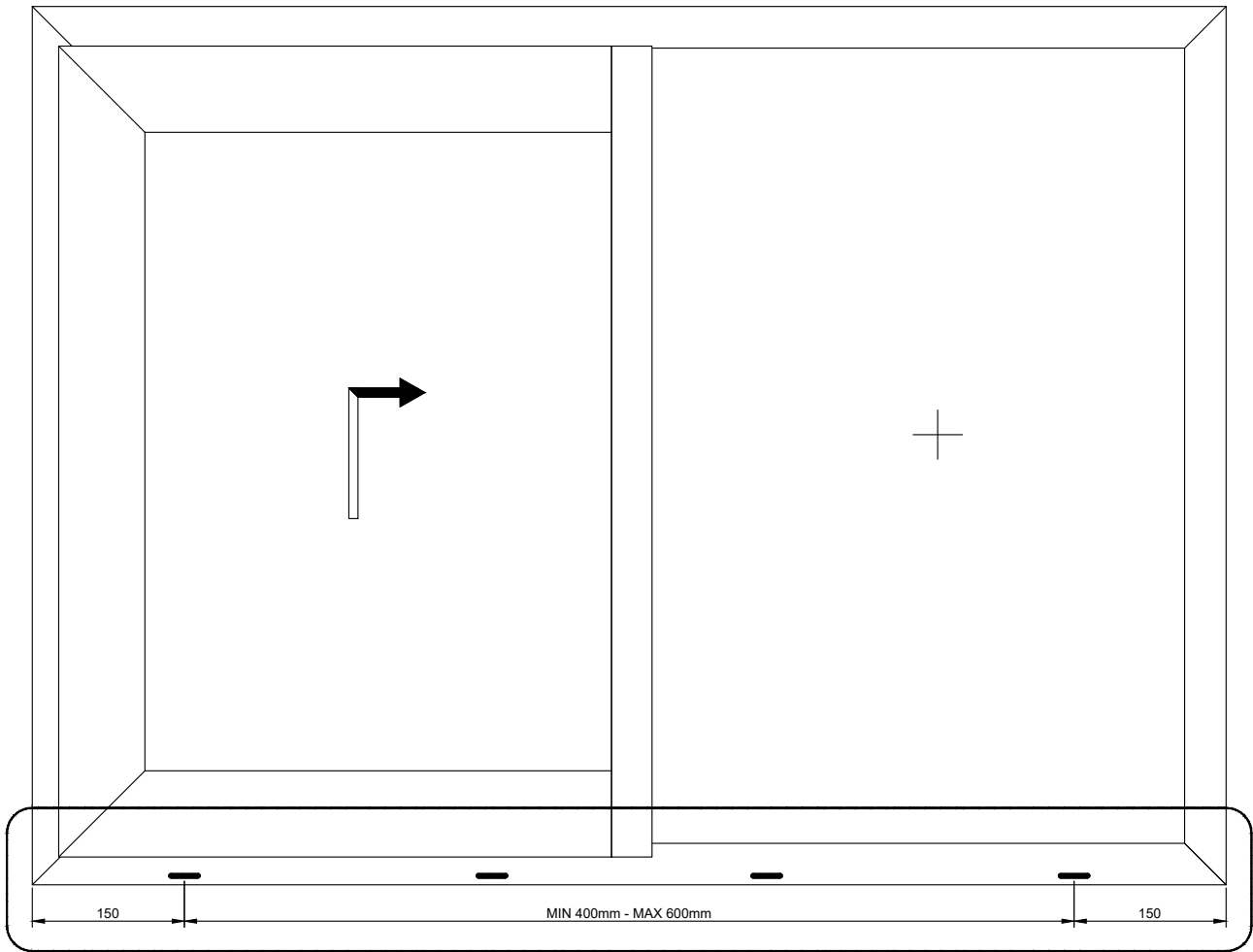




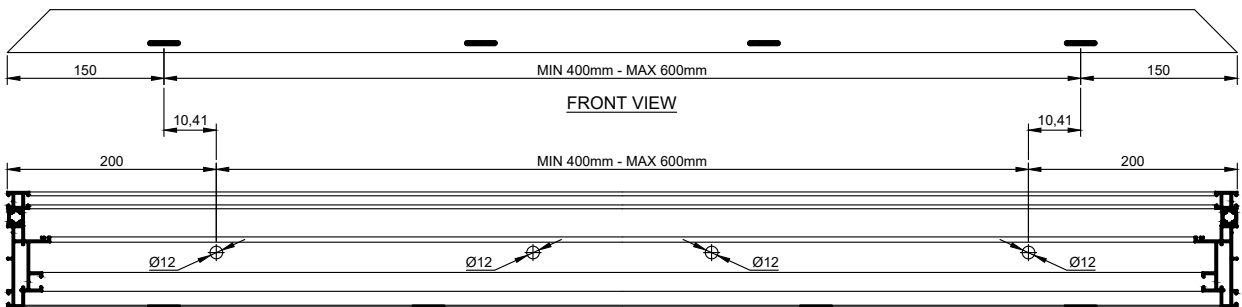
BI-PARTING PROFILES  
M & F DETAIL-09  
(TOP,BOTTOM AND SIDES)



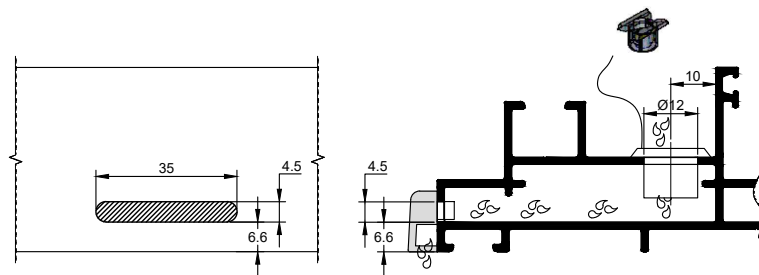
DRAINAGE DETAIL-10



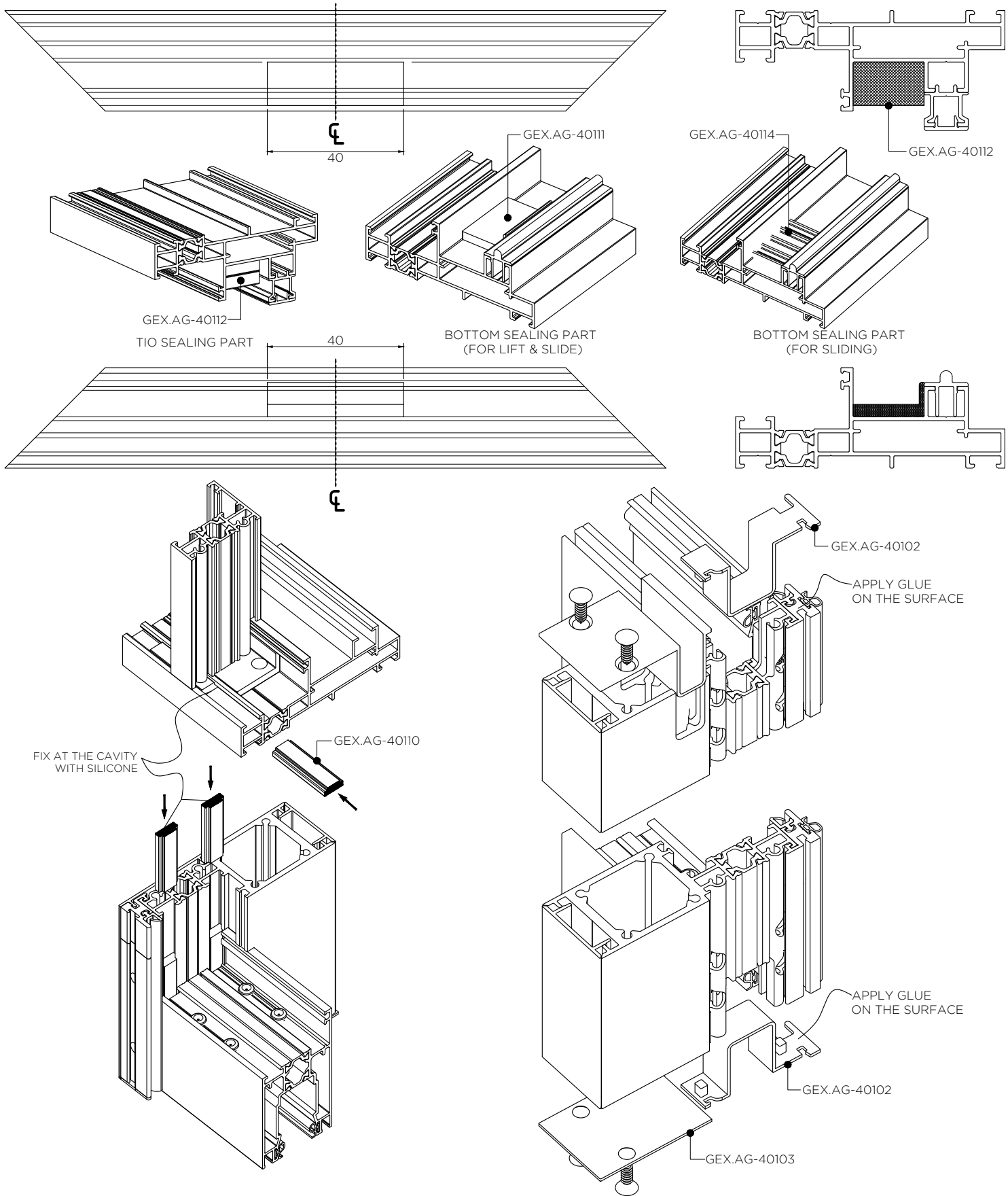
ELEVATION



PLAN VIEW

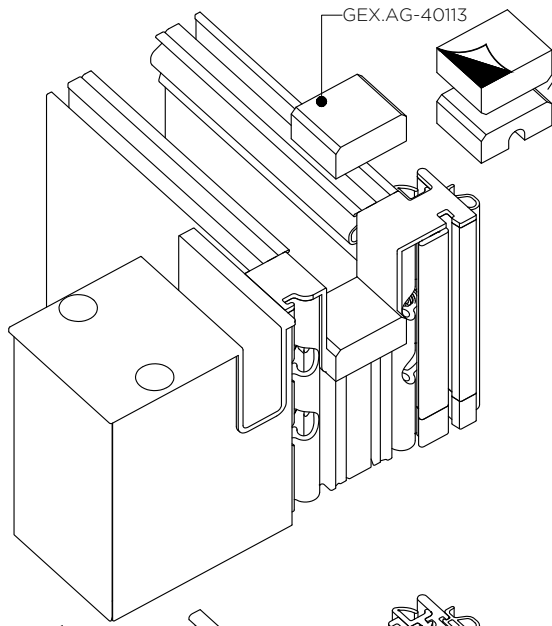


SEALING PARTS FIXING DETAIL-11

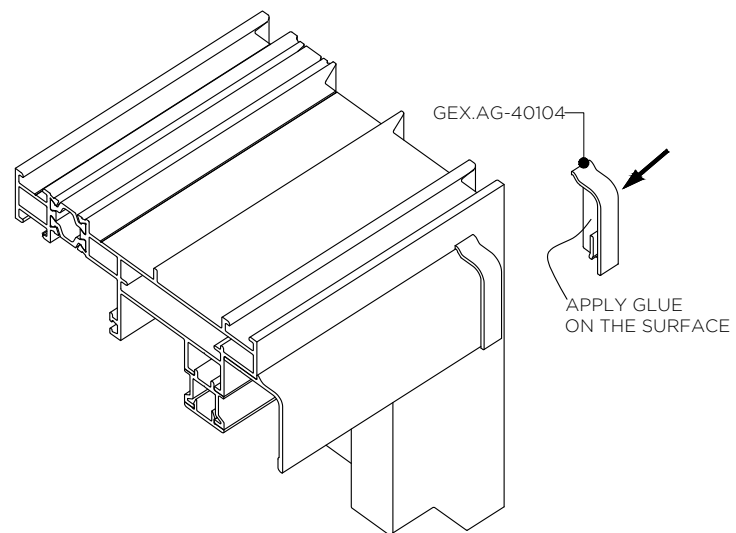
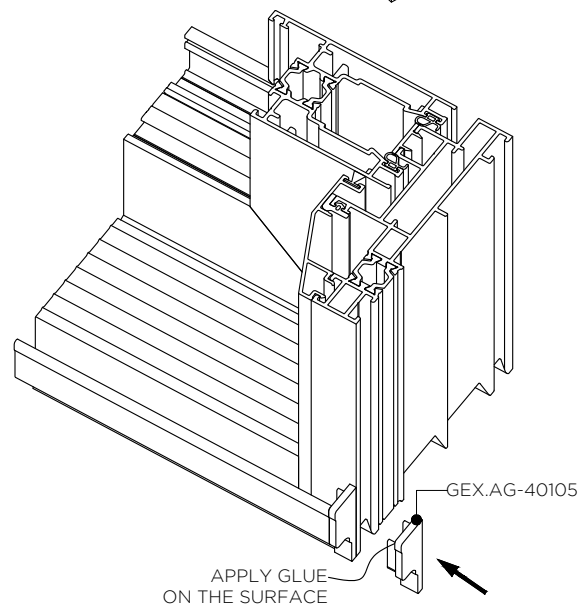
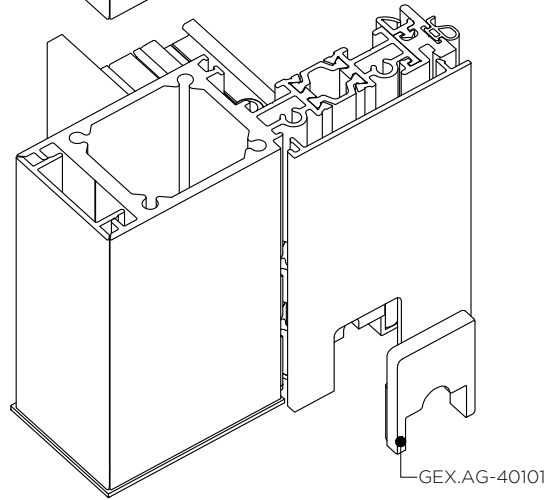
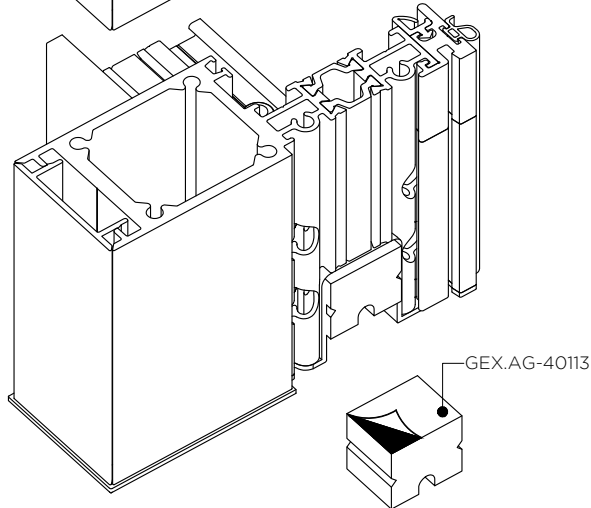
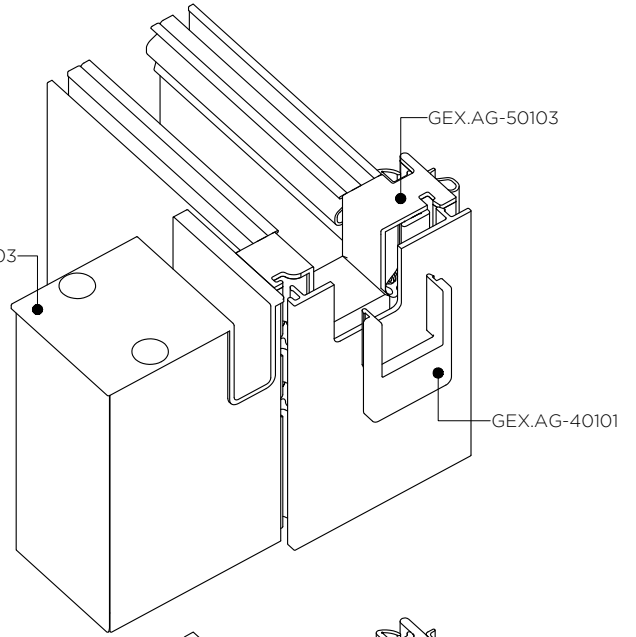


SEALING PARTS FIXING DETAIL-12

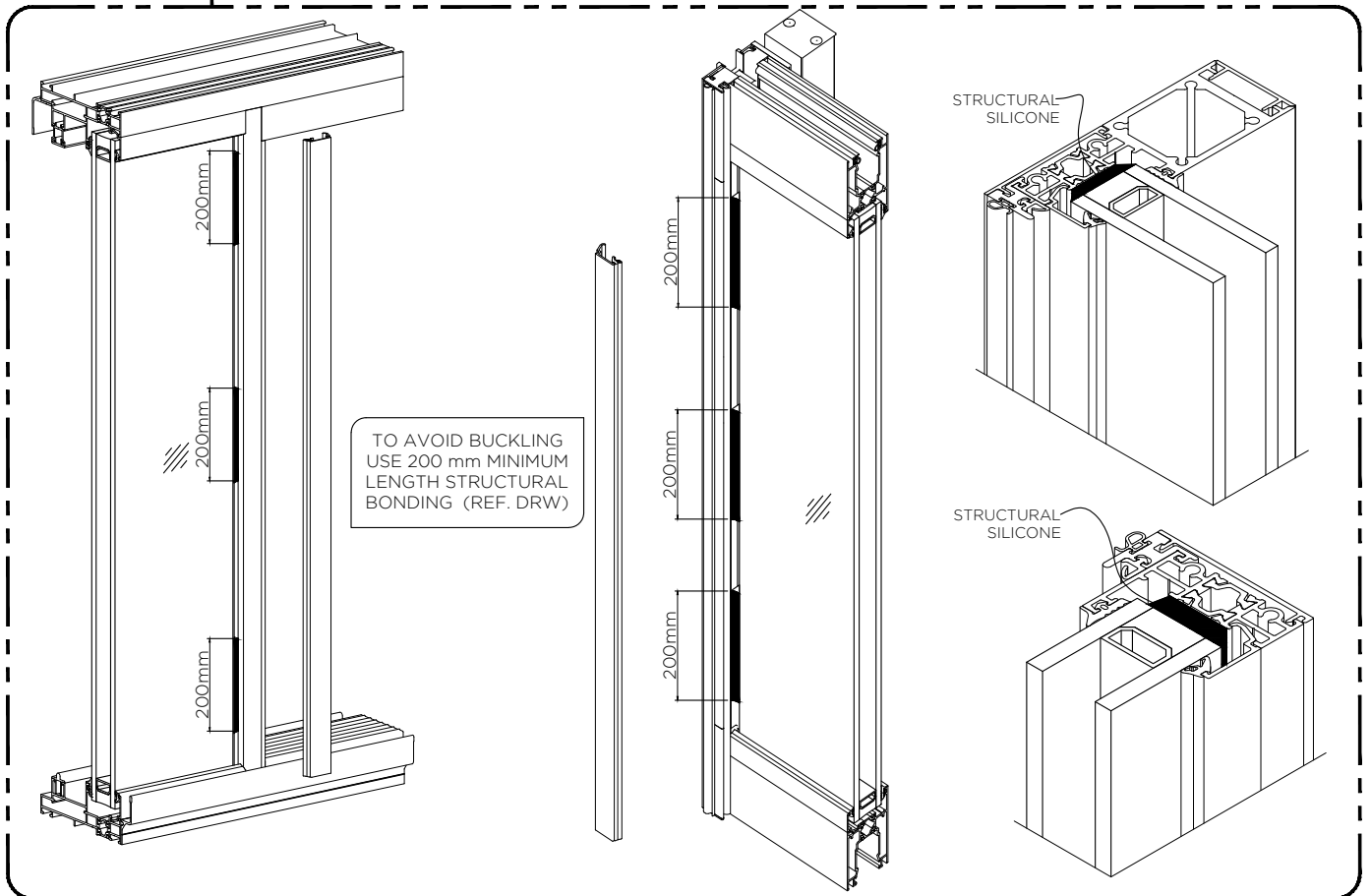
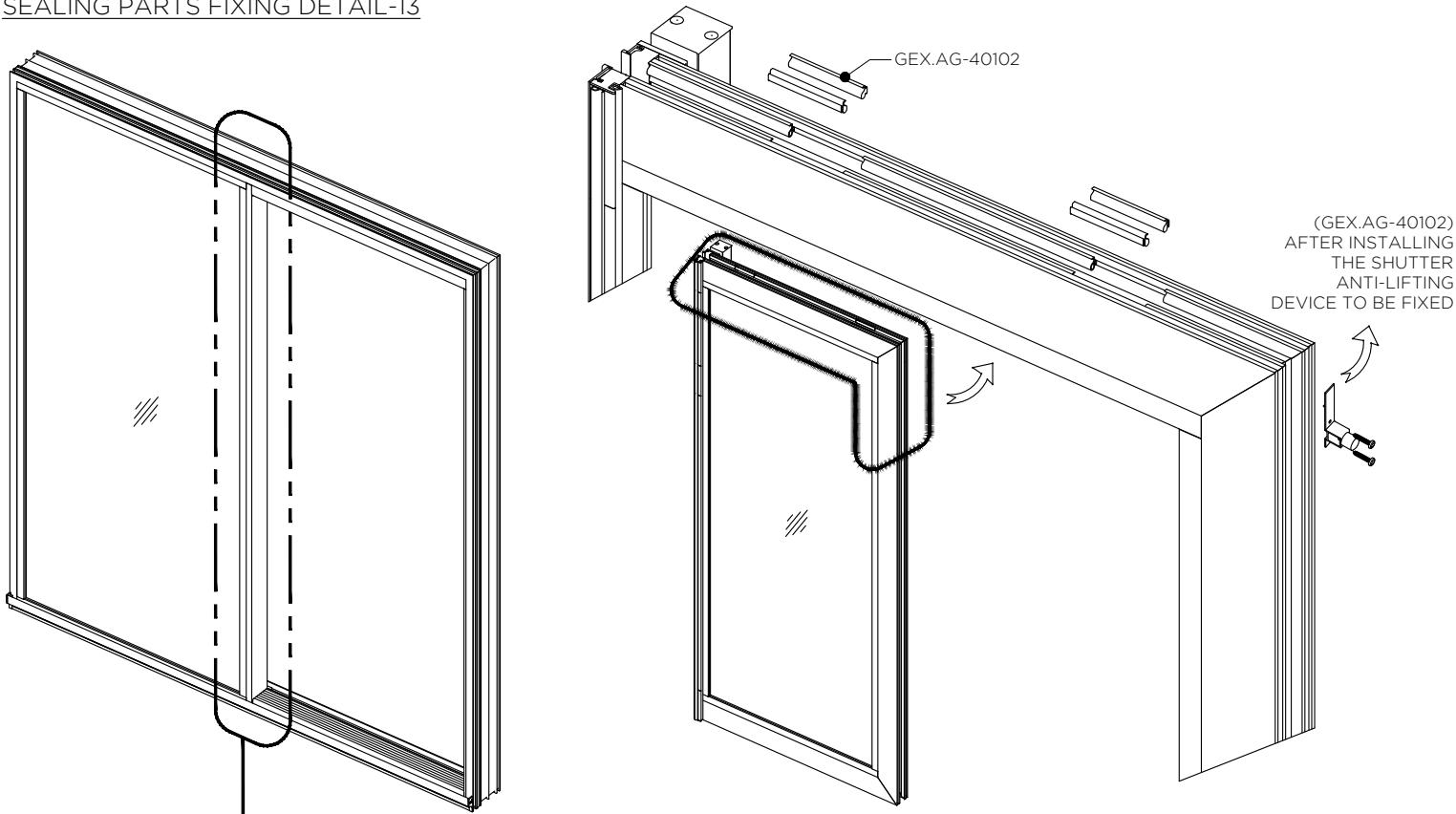
CUT THE GEX.AG-40113  
TO PLACE AT TOP



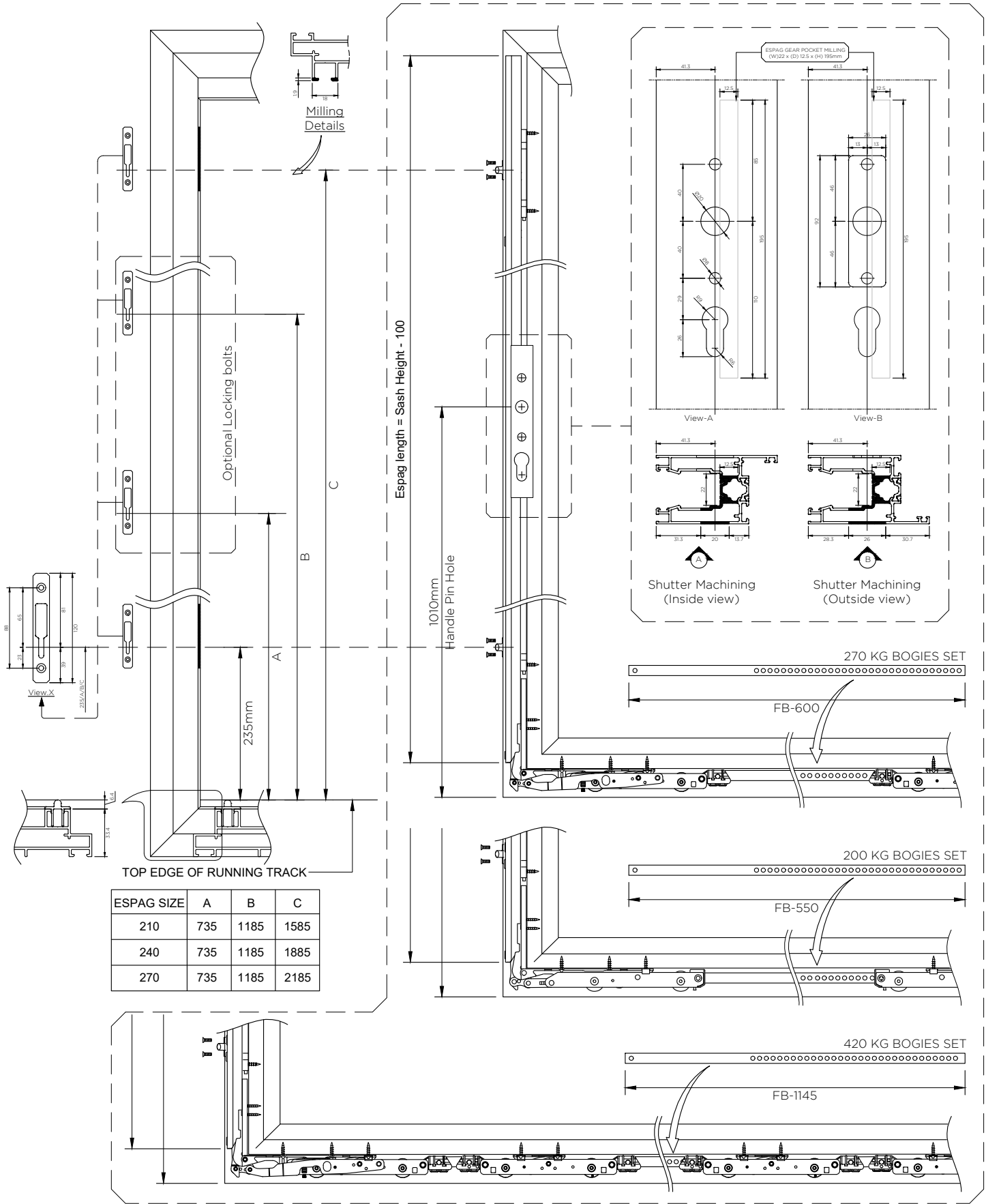
GEX.AG-40103



SEALING PARTS FIXING DETAIL-13



LIFT AND SLIDE HARDWARE MACHINING DETAILS-14



SLIDING HARDWARE MACHINING AND FIXING DETAILS-15

